

PROGRAMMING MANUAL

AC/DC POWER SOURCE ASR SERIES

ASR202-401G

ASR302-401G

ASR402-401G



■ About a trademark, a registered trademark

A company name and the brand name mentioned in this instruction manual are the trademark or the registered trademark of each company or group in each country and region.

■ About this instruction manual

When copying the part or all of contents of this instruction manual, seek the copyright holder.

In addition, the specifications of the product and the contents of this instruction manual are subject to change without notice for improvement. The latest version of the instruction manual is posted on our website. (<https://www.texio.co.jp/>)

For the purpose of considering the environment and reducing waste, we are progressively eliminating the paper or CD manuals attached to our products.

■ About firmware version

This programming manual is required firmware version 1.36 or higher.

CONTENTS

| | | |
|---------|---|----|
| 1. | REMOTE CONTROL | 1 |
| 1-1. | Interface Configuration..... | 1 |
| 1-1-1. | Configure Ethernet Connection | 1 |
| 1-1-2. | Web Server Remote Control Function Check | 3 |
| 1-1-3. | Socket Server Function Check | 3 |
| 1-2. | USB Interface | 8 |
| 1-2-1. | USB Remote Interface | 8 |
| 1-2-2. | USB Remote Control Function Check | 8 |
| 1-3. | RS-232C Interface | 10 |
| 1-3-1. | RS-232C Remote Interface | 10 |
| 1-3-2. | RS-232C Remote Control Function Check | 11 |
| 1-3-3. | Using Realterm to Establish a Remote Connection | 12 |
| 1-4. | GP-IB Interface | 15 |
| 1-4-1. | GP-IB Remote Interface | 15 |
| 1-4-2. | GP-IB Function Check..... | 16 |
| 2. | Command Syntax..... | 19 |
| 3. | Command List..... | 23 |
| 3-1. | Common Commands | 23 |
| 3-1-1. | *CLS | 23 |
| 3-1-2. | *ESE | 23 |
| 3-1-3. | *ESR | 23 |
| 3-1-4. | *IDN | 23 |
| 3-1-5. | *OPC..... | 24 |
| 3-1-6. | *RCL | 24 |
| 3-1-7. | *RST | 24 |
| 3-1-8. | *SAV | 25 |
| 3-1-9. | *SRE | 25 |
| 3-1-10. | *STB | 25 |
| 3-1-11. | *WAI..... | 25 |
| 3-2. | Trace/Data Commands | 26 |
| 3-2-1. | :DATA TRACe:SEQuence:CLEAr | 26 |
| 3-2-2. | :DATA TRACe:SEQuence:RECall | 26 |
| 3-2-3. | :DATA TRACe:SEQuence:STORE | 26 |
| 3-2-4. | :DATA TRACe:SIMulation:CLEAr | 27 |
| 3-2-5. | :DATA TRACe:SIMulation:RECall | 27 |
| 3-2-6. | :DATA TRACe:SIMulation:STORE..... | 27 |
| 3-2-7. | :DATA TRACe:WAVe:CLEAr | 28 |
| 3-2-8. | :DATA TRACe:WAVe[:DATA]..... | 28 |
| 3-3. | Measure Commands..... | 28 |
| 3-3-1. | :MEASure[:SCALar]:CURRent:CFACtor | 28 |
| 3-3-2. | :MEASure[:SCALar]:CURRent:HIGH..... | 29 |
| 3-3-3. | :MEASure[:SCALar]:CURRent:LOW | 29 |
| 3-3-4. | :MEASure[:SCALar]:CURRent:PEAK: CLEAr | 29 |
| 3-3-5. | :MEASure[:SCALar]:CURRent:PEAK: HOLD | 29 |
| 3-3-6. | :MEASure[:SCALar]:CURRent[:RMS]..... | 29 |
| 3-3-7. | :MEASure[:SCALar]:CURRent:AVERage..... | 30 |

| | |
|---|-----------|
| 3-3-8. :MEASure[:SCALar]:CURRent:HARMonic [:RMS] | 30 |
| 3-3-9. :MEASure[:SCALar]:CURRent:HARMonic: RATIo | 30 |
| 3-3-10. :MEASure[:SCALar]:FREQuency | 30 |
| 3-3-11. :MEASure[:SCALar]:POWEr[:AC]: APParent | 31 |
| 3-3-12. :MEASure[:SCALar]:POWEr[:AC]: PFACTor | 31 |
| 3-3-13. :MEASure[:SCALar]:POWEr[:AC]: REACTive | 31 |
| 3-3-14. :MEASure[:SCALar]:POWEr[:AC][:REAL] | 31 |
| 3-3-15. :MEASure[:SCALar]:VOLTage[:RMS] | 31 |
| 3-3-16. :MEASure[:SCALar]:VOLTage:AVERage | 31 |
| 3-3-17. :MEASure[:SCALar]:VOLTage:HIGH | 32 |
| 3-3-18. :MEASure[:SCALar]:VOLTage:LOW | 32 |
| 3-3-19. :MEASure[:SCALar]:VOLTage:HARMonic [:RMS] | 32 |
| 3-3-20. :MEASure[:SCALar]:VOLTage:HARMonic: RATIo | 32 |
| 3-3-21. :MEASure:CONFIgure:SENSing | 33 |
| 3-3-22. :MEASure:AVERage:COUNT | 33 |
| 3-3-23. :MEASure:UPDate:RATE | 33 |
| 3-4. Memory Commands..... | 34 |
| 3-4-1. :MEMory:RCL | 34 |
| 3-4-2. :MEMory:SAV | 34 |
| 3-5. Output Commands..... | 35 |
| 3-5-1. :OUTPut[:STATe] | 35 |
| 3-5-2. :OUTPut:PON | 35 |
| 3-5-3. :OUTPut:PROTEction:CLEar | 35 |
| 3-5-4. :OUTPut:RELay | 36 |
| 3-6. Status Commands | 36 |
| 3-6-1. :STATus:OPERation:CONDition | 36 |
| 3-6-2. :STATus:OPERation:ENABLE | 36 |
| 3-6-3. :STATus:OPERation[:EVENT] | 37 |
| 3-6-4. :STATus:OPERation:NTRansition | 37 |
| 3-6-5. :STATus:OPERation:PTRansition | 37 |
| 3-6-6. :STATus:QUESTionable[:EVENT] | 37 |
| 3-6-7. :STATus:QUESTionable:CONDition | 38 |
| 3-6-8. :STATus:QUESTionable:ENABLE | 38 |
| 3-6-9. :STATus:QUESTionable:NTRansition | 38 |
| 3-6-10. :STATus:QUESTionable:PTRansition | 39 |
| 3-6-11. :STATus:PRESet | 39 |
| 3-6-12. :STATus:WARNing:CONDition | 40 |
| 3-6-13. :STATus:WARNing:ENABLE | 40 |
| 3-6-14. :STATus:WARNing[:EVENT] | 40 |
| 3-6-15. :STATus:WARNing:NTRansition | 41 |
| 3-6-16. :STATus:WARNing:PTRansition | 41 |
| 3-6-17. :STATus:LOCK:CONDition | 41 |
| 3-6-18. :STATus:LOCK:ENABLE | 42 |
| 3-6-19. :STATus:LOCK[:EVENT] | 42 |
| 3-6-20. :STATus:LOCK:NTRansition | 42 |
| 3-6-21. :STATus:LOCK:PTRansition | 42 |
| 3-7. System Function Commands..... | 43 |
| 3-7-1. :SYSTem:ACIN:DETEction | 43 |
| 3-7-2. :SYSTem:ARBITrary:EDIT:BUILtin | 43 |
| 3-7-3. :SYSTem:ARBITrary:EDIT:SURGe | 44 |
| 3-7-4. :SYSTem:ARBITrary:EDIT:STAir | 44 |
| 3-7-5. :SYSTem:ARBITrary:EDIT:CFACTor2 | 45 |

| | |
|---|-----------|
| 3-7-6. :SYSTem:ARBitrary:EDIT:CFACTOR1 | 46 |
| 3-7-7. :SYSTem:ARBitrary:EDIT:CLIP | 46 |
| 3-7-8. :SYSTem:ARBitrary:EDIT:STORE | 46 |
| 3-7-9. :SYSTem:ARBitrary:EDIT:TRlAngle | 48 |
| 3-7-10. :SYSTem:BEEPer:STATe | 48 |
| 3-7-11. :SYSTem:COMMunicate:GPIB[SELf]:ADDReSS | 49 |
| 3-7-12. :SYSTem:COMMunicate:LAN:DHCP | 49 |
| 3-7-13. :SYSTem:COMMunicate:LAN:DNS | 49 |
| 3-7-14. :SYSTem:COMMunicate:LAN:GATEWay | 50 |
| 3-7-15. :SYSTem:COMMunicate:LAN:IPADdReSS | 50 |
| 3-7-16. :SYSTem:COMMunicate:LAN:MAC | 50 |
| 3-7-17. :SYSTem:COMMunicate:LAN:SMASk | 51 |
| 3-7-18. :SYSTem:COMMunicate:RLStAtE | 51 |
| 3-7-19. :SYSTem:COMMunicate:SERial [:RECeive]:TRANSMit:BAUD | 51 |
| 3-7-20. :SYSTem:COMMunicate:SERial [:RECeive]:TRANSMit:BITS | 52 |
| 3-7-21. :SYSTem:COMMunicate:SERial [:RECeive]:TRANSMit:PARity | 52 |
| 3-7-22. :SYSTem:COMMunicate:SERial [:RECeive]:TRANSMit:SBITs | 53 |
| 3-7-23. :SYSTem:COMMunicate:TCPIp:CONTRol | 53 |
| 3-7-24. :SYSTem:COMMunicate:USB:FRONt: STATe | 54 |
| 3-7-25. :SYSTem:COMMunicate:USB:REAR: STATe | 54 |
| 3-7-26. :SYSTem:CONFigure[MODE] | 54 |
| 3-7-27. :SYSTem:CONFigure:EXTIo[STATe] | 55 |
| 3-7-28. :SYSTem:CONFigure:TRIGger:OUTPut: SOURce | 55 |
| 3-7-29. :SYSTem:CONFigure:TRIGger:OUTPut: WIDTH | 55 |
| 3-7-30. :SYSTem:ERRor | 56 |
| 3-7-31. :SYSTem:ERRor:ENABle | 56 |
| 3-7-32. :SYSTem:HOLD:STATe | 56 |
| 3-7-33. :SYSTem:IPKHold:TIME | 57 |
| 3-7-34. :SYSTem:KLOCK | 57 |
| 3-7-35. :SYSTem:REBoot | 57 |
| 3-7-36. :SYSTem:SCPI:DATA CLear | 57 |
| 3-7-37. :SYSTem:SCPI:DATA | 57 |
| 3-7-38. :SYSTem:SCPI:DATA? Error | 58 |
| 3-7-39. :SYSTem:SLEW:MODE | 58 |
| 3-7-40. :SYSTem:VUNit | 58 |
| 3-8. Source Commands | 59 |
| 3-8-1. [:SOURce]:CURRent:LIMit:PEAK:HIGH | 59 |
| 3-8-2. [:SOURce]:CURRent:LIMit:PEAK:LOW | 59 |
| 3-8-3. [:SOURce]:CURRent:LIMit:RMS[AMPLitude] | 60 |
| 3-8-4. [:SOURce]:CURRent:LIMit:PEAK:MODE | 60 |
| 3-8-5. [:SOURce]:CURRent:LIMit:RMS:MODE | 61 |
| 3-8-6. [:SOURce]:FREQUency:LIMit:HIGH | 61 |
| 3-8-7. [:SOURce]:FREQUency:LIMit:LOW | 61 |
| 3-8-8. [:SOURce]:FREQUency[IMMediate] | 62 |
| 3-8-9. [:SOURce]:FUNctIon[SHAPE][IMMediate] | 62 |
| 3-8-10. [:SOURce]:FUNctIon:THD:FORMat | 63 |
| 3-8-11. [:SOURce]:MODE | 64 |
| 3-8-12. [:SOURce]:PHASe:STARt:STATe | 64 |
| 3-8-13. [:SOURce]:PHASe:STOP:STATe | 65 |
| 3-8-14. [:SOURce]:PHASe:STARt[IMMediate] | 65 |
| 3-8-15. [:SOURce]:PHASe:STOP[IMMediate] | 66 |
| 3-8-16. [:SOURce]:PHASe:SYNC[IMMediate] | 66 |
| 3-8-17. [:SOURce]:READ | 67 |

| | |
|--|-----------|
| 3-8-18. [:SOURce]:VOLTage:RANGe | 67 |
| 3-8-19. [:SOURce]:VOLTage:LIMit:RMS | 68 |
| 3-8-20. [:SOURce]:VOLTage:LIMit:HIGH | 68 |
| 3-8-21. [:SOURce]:VOLTage:LIMit:LOW | 69 |
| 3-8-22. [:SOURce]:VOLTage:LIMit:PEAK | 69 |
| 3-8-23. [:SOURce]:VOLTage[:LEVel][:IMMediate][:AMPLitude] | 70 |
| 3-8-24. [:SOURce]:VOLTage[:LEVel][:IMMediate]:OFFSet | 70 |
| 3-9. Sequence Commands | 71 |
| 3-9-1. [:SOURce]:SEQuence:CPARameter | 71 |
| 3-9-2. [:SOURce]:SEQuence:CSTep | 72 |
| 3-9-3. [:SOURce]:SEQuence:SPARameter | 72 |
| 3-9-4. [:SOURce]:SEQuence:STEP | 73 |
| 3-9-5. [:SOURce]:SEQuence:CONDition | 74 |
| 3-9-6. :TRIGger:SEQuence:SELected:EXECute | 74 |
| 3-10. Simulate Commands(Only Simulation Mode Active).75 | |
| 3-10-1. [:SOURce]:SIMulation:CONDition | 75 |
| 3-10-3. [:SOURce]:SIMulation:ABNormal:FREQuency | 75 |
| 3-10-4. [:SOURce]:SIMulation:ABNormal:PHASe:STARt:ENABle | 76 |
| 3-10-5. [:SOURce]:SIMulation:ABNormal:PHASe:STARt[:IMMediate] | 76 |
| 3-10-6. [:SOURce]:SIMulation:ABNormal:PHASe:STOP:ENABle | 77 |
| 3-10-7. [:SOURce]:SIMulation:ABNormal:PHASe:STOP[:IMMediate] | 77 |
| 3-10-8. [:SOURce]:SIMulation:ABNormal:TIME | 78 |
| 3-10-9. [:SOURce]:SIMulation:ABNormal: VOLTage | 78 |
| 3-10-10. [:SOURce]:SIMulation:CSTep | 79 |
| 3-10-11. [:SOURce]:SIMulation:INITial:CODE | 79 |
| 3-10-12. [:SOURce]:SIMulation:INITial: FREQuency | 79 |
| 3-10-13. [:SOURce]:SIMulation:INITial:PHASe: STARt:ENABle | 80 |
| 3-10-14. [:SOURce]:SIMulation:INITial:PHASe: STARt[:IMMediate] | 80 |
| 3-10-15. [:SOURce]:SIMulation:INITial:PHASe: STOP:ENABle | 81 |
| 3-10-16. [:SOURce]:SIMulation:INITial:PHASe: STOP[:IMMediate] | 81 |
| 3-10-17. [:SOURce]:SIMulation:INITial:VOLTage | 82 |
| 3-10-18. [:SOURce]:SIMulation:NORMal<1 2>: CODE | 82 |
| 3-10-19. [:SOURce]:SIMulation:NORMal 1: FREQuency | 83 |
| 3-10-20. [:SOURce]:SIMulation:NORMal<1 2>: PHASe:STARt:ENABle | 83 |
| 3-10-21. [:SOURce]:SIMulation:NORMal<1 2>: PHASe:STARt[:IMMediate] ... | 84 |
| 3-10-22. [:SOURce]:SIMulation:NORMal<1 2>: PHASe:STOP:ENABle | 84 |
| 3-10-23. [:SOURce]:SIMulation:NORMal<1 2>: PHASe:STOP[:IMMediate] ... | 85 |
| 3-10-24. [:SOURce]:SIMulation:NORMal<1 2>: TIME | 85 |
| 3-10-25. [:SOURce]:SIMulation:NORMal1: VOLTage | 86 |
| 3-10-26. [:SOURce]:SIMulation:REPeat:COUNT | 86 |
| 3-10-27. [:SOURce]:SIMulation:REPeat:ENABle | 87 |
| 3-10-28. [:SOURce]:SIMulation:TRANsition<1 2>: TIME | 87 |
| 3-10-29. [:SOURce]:SIMulation:TRANsition<1 2>: CODE | 87 |
| 3-10-30. :TRIGger:SIMulation:SELected:EXECute | 88 |
| 3-11. Input Subsystem Command.....88 | |
| 3-11-1. :INPut:GAIN | 88 |
| 3-11-2. :INPut:SYNC:SOURce | 89 |
| 3-12. Display Command.....89 | |
| 3-12-1. :DISPlay[:WINDow]:DESign:MODE | 89 |
| 3-12-2. :DISPlay[:WINDow]:MEASure: SOURce<1 2 3> | 89 |
| 4. Status Register Overview | 91 |

| | |
|---|-----|
| 4-1. Introduction to the Status Registers..... | 91 |
| 4-2. The Status Registers..... | 92 |
| 4-3. Questionable Status Register Group | 93 |
| 4-4. Operation Status Register Group | 95 |
| 4-5. Warning Status Register Group | 96 |
| 4-6. System Lock Status Register Group..... | 99 |
| 4-7. Standard Event Status Register Group | 101 |
| 4-8. Status Byte Register & Service Request Enable Register..... | 103 |
| 5. Error List..... | 105 |
| 5-1. Command Errors..... | 105 |
| 5-2. Execution Errors..... | 109 |
| 5-3. Device Specific Errors..... | 111 |
| 5-4. Query Errors..... | 112 |
| 6. APPENDIX..... | 113 |
| 6-1. Factory Default Settings..... | 113 |

1. REMOTE CONTROL

This chapter describes basic configuration of IEEE488.2 based remote control.

1-1. Interface Configuration

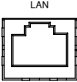

1-1-1. Configure Ethernet Connection

The Ethernet interface can be configured for a number of different applications. Ethernet can be configured for basic remote control or monitoring using a web server or it can be configured as a socket server.

The ASR supports both DHCP connections so the instrument can be automatically connected to an existing network or alternatively, network settings can be manually configured.

| | | |
|---------------------|----------------------------|---------------------------|
| Ethernet Parameters | MAC Address (display only) | DHCP |
| | IP Address | Subnet mask |
| | Gateway | DNS address |
| | DNS Server | Socket port fixed at 2268 |
| | | |

Ethernet Configuration

1. Connect a LAN cable from the PC to the Ethernet port on the rear panel. 
2. Press the *Menu* key. The Menu setting will appear on the display. 
3. Use the scroll wheel to go to item 3, *LAN* and press *Enter*.
4. If the LAN cable is installed correctly a connection is active, the *Connection Status* will show *Online*.

- To automatically have the network assign an IP address, set DHCP to ON. Otherwise set DHCP to OFF to manually set the Ethernet settings.

| | |
|------|---------|
| DHCP | ON, OFF |
|------|---------|

- If DHCP was set to OFF, configure the remaining LAN parameters.

| |
|------------|
| IP Address |
|------------|

| |
|-------------|
| Subnet Mask |
|-------------|

| |
|---------|
| Gateway |
|---------|

| |
|------------|
| DNS Server |
|------------|

| |
|-------------|
| Socket Port |
|-------------|

LAN configuration - 1



LAN configuration - 2



Exit

- Press *Exit*[F4] to exit from the LAN settings.



Note

If connecting to an existing network, check the settings with your administrator.

1-1-2. Web Server Remote Control Function Check

Functionality Check

Enter the IP address of the power supply (for example: [http:// XXX.XXX.XXX.XXX](http://XXX.XXX.XXX.XXX)) in a web browser after the instrument has been configured for LAN (page 1).

The web interface allows you to:

- View the system and information and the network configuration.
- View the analog control pinout.
- View the dimensions of the unit.
- View the operating area

Example:

The screenshot shows the TEXIO web interface. At the top, there is a logo for TEXIO with the tagline "Test and Measurement Solutions". To the right of the logo are links for "Visit Our Site", "Support", and "Contact Us". Below the header, there is a navigation menu with "Welcome Page" selected. The main content area is divided into several sections: "Network Configuration" (highlighted with a dashed border), "Analog Control", "Figure of Dimensions", and "Operating Area". The "Network Configuration" section contains a table with the following data:

| Network Configuration | |
|-----------------------|---|
| IP Address: | 172.16.5.125 |
| Subnet Mask: | 255.255.128.0 |
| Gateway: | 172.16.0.254 |
| DNS: | 172.16.1.252 |
| DHCP State: | <input type="radio"/> ON <input checked="" type="radio"/> OFF |

The "Figure of Dimensions" section contains a "Password:" label and an empty text input field. The "Operating Area" section contains a "Submit" button.

1-1-3. Socket Server Function Check

Background

To test the socket server functionality, National Instruments Measurement and Automation Explorer can be used. This program is available on the NI website, www.ni.com, via a search for the VISA Run-time Engine page, or "downloads" at the following URL, <http://www.ni.com/visa/>

Requirements

Operating System: Windows

Functionality
Check

1. Start the NI Measurement and Automation Explorer (MAX) program. Using Windows, press:

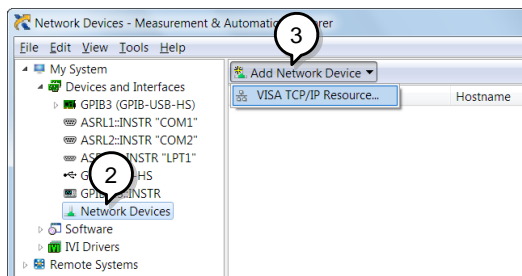
Start>All Programs>NI MAX



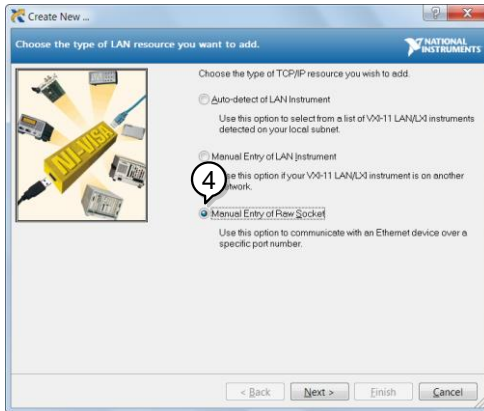
2. From the Configuration panel access;

My System>Devices and Interfaces>Network Devices

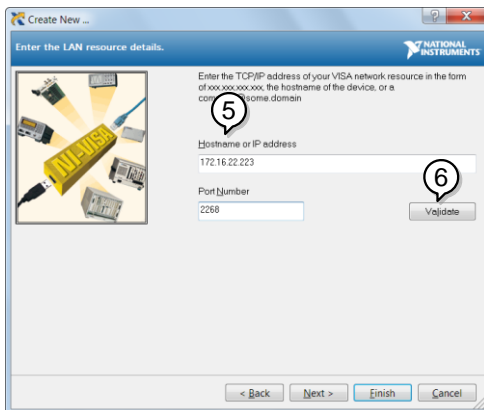
3. Press *Add New Network Device>Visa TCP/IP Resource...*



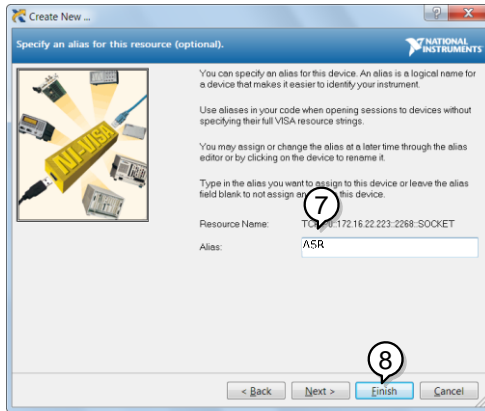
4. Select *Manual Entry of Raw Socket* from the popup window.



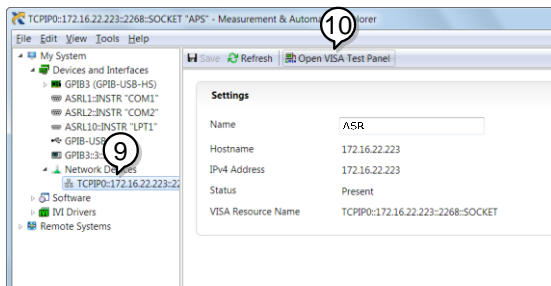
5. Enter the IP address and the port number of the ASR. The port number is fixed at 2268.
6. Double click the Validate button and press *Next*.



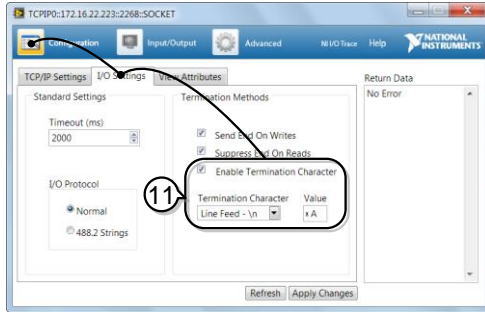
- Next configure the Alias (name) of the ASR connection. In this example the Alias is: ASR
- Click finish.



- The IP address of the power supply will now appear under Network Devices in the configuration panel. Select this icon now.
- Press *Open VISA Test Panel*.



- Click the *Configuration* Icon. Under the *I/O Settings* tab check *Enable Termination Character*. The termination character should be set as *Line Feed -\n*.

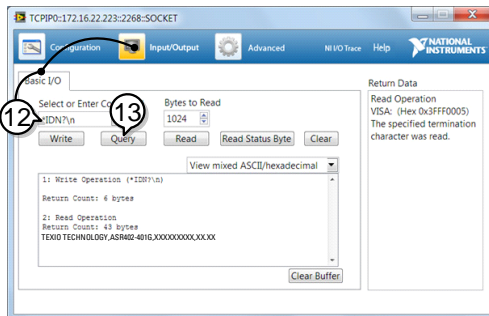


- Click the *Input/Output* icon. Under the *Basic I/O* tab, make sure **IDN?\n* is entered in the *Select or Enter Command* drop box.

- Click *Query*.

The ASR will return the machine identification string into the buffer area:

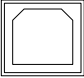

TEXIO TECHNOLOGY, ASRXXX-XXXG,
XXXXXXXXXX, XX.XX

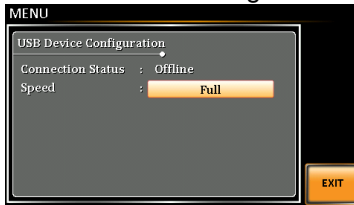



1-2.USB Interface

1-2-1. USB Remote Interface

| | | |
|-------------------|--------------------|--------------------------|
| USB Configuration | PC side connector | Type A, host |
| | ASR side connector | Rear panel Type B, slave |
| | Speed | 1.1/2.0 (full speed) |
| | USB Class | CDC |


- | | | |
|-------|--|--|
| Steps | <ol style="list-style-type: none"> 1. Connect the Type A-Type B USB cable from the PC to the rear panel USB B port. 2. Press the <i>Menu</i> key. The Menu setting will appear on the display. 3. Use the scroll wheel to go to item 4, <i>USB Device</i>. 4. If the connection is successful <i>Connection Status</i> will change from Offline to Online. <i>USB Device Configuration</i> |   |
|-------|--|--|



- | | | |
|------|--|---|
| Exit | 5. Press <i>Exit[F4]</i> to exit from the rear panel USB settings. |  |
|------|--|---|

1-2-2. USB Remote Control Function Check

| | |
|---------------------|--|
| Functionality Check | <p>Invoke a terminal application such as Realterm.</p> <p>ASR will appear as a COM port on the PC. To check the COM settings in Windows, see the Device Manager.</p> |
|---------------------|--|

 **Note** If you are not familiar with using a terminal application to send/receive remote commands via a USB connection, please see page 12 for more information.

Run this query command via the terminal after the instrument has been configured for USB remote control (page 8).

*IDN?

This should return the Manufacturer, Model number, Serial number, and Software version in the following format.

TEXIO TECHNOLOGY, ASRXXX-XXX,
XXXXXXXXXX, XX.XX

Manufacturer: TEXIO TECHNOLOGY

Model number : ASRXXX-XXX

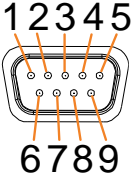
Serial number : XXXXXXXXXXX

Software version : XX.XX

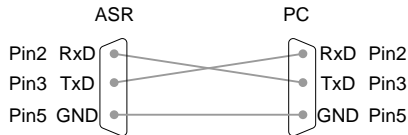
1-3.RS-232C Interface

1-3-1. RS-232C Remote Interface

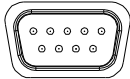

| | | |
|-----------------------|------------|--|
| RS-232C Configuration | Connector | Dsub-9, male |
| | Parameters | Baud rate, data bits, parity, stop bits. |

| | | |
|----------------|---|-------------------------|
| Pin Assignment |  | 2: RxD (Receive data) |
| | | 3: TxD (Transmit data) |
| | | 5: GND |
| | | 4, 6 ~ 9: No connection |

Pin Connection Use a Null Modem connection (RS-232C cross cable) as shown in the diagram below.



Steps

1. Connect the RS-232C cable from the PC to the rear panel RS-232 port. 
2. Press the *Menu* key. The Menu setting will appear on the display. 
3. Use the scroll wheel to go to item 5, *RS232C* and press *Enter*.
4. Set the RS232C relative settings.

| | |
|-----------|---|
| Baud rate | 1200, 2400, 4800, 9600(default), 19200, 38400, 57600, 115200, |
|-----------|---|

| | |
|-----------|--------------------------|
| Data bits | 7 bits, 8 bits(default) |
| Parity | None(default), Odd, Even |
| Stop bits | 1 bit(default), 2 bits |

RS232C Configuration



Exit

5. Press *Exit[F4]* to exit from the RS232C settings.



Note

The standard accessory does Not include RS232C data cable. Please purchase the additional GTL-232 which will meet your need for RS232C connection.

1-3-2. RS-232C Remote Control Function Check

Functionality
Check

Invoke a terminal application such as Realterm.
For RS-232C, set the COM port, baud rate, stop bit, data bit and parity accordingly.
To check the COM settings in Windows, see the Device Manager.



Note

If you are not familiar with using a terminal application to send/receive remote commands from the serial port, please see page 12 for more information.

Run this query command via the terminal after the instrument has been configured for RS-232C remote control (page 10).

*IDN?

This should return the Manufacturer, Model number, Serial number, and Software version in the following format.

TEXIO TECHNOLOGY, ASRXXX-XXX,

XXXXXXXXXX, XX.XX
Manufacturer: TEXIO TECHNOLOGY
Model number : ASRXXX-XXX
Serial number : XXXXXXXXXXX
Software version : XX.XX

1-3-3. Using Realterm to Establish a Remote Connection

Background Realterm is a terminal program that can be used to communicate with a device attached to the serial port of a PC or via an emulated serial port via USB.

The following instructions apply to version 2.0.0.70. Even though Realterm is used as an example to establish a remote connection, any terminal program can be used that has similar functionality.



Note

Realterm can be downloaded on Sourceforge.net free of charge.

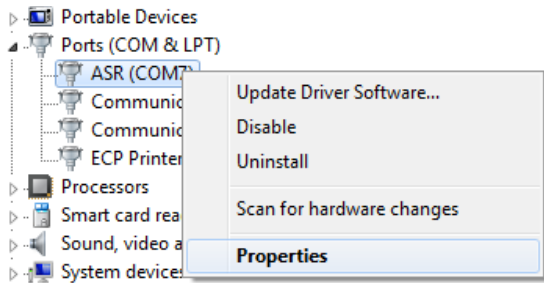
For more information please see <http://realterm.sourceforge.net/>

- Operation**
1. Download Realterm and install according to the instructions on the Realterm website.
 2. Connect the ASR via USB (page 8) or via RS-232 (page 10).
 3. If using RS-232, make note of the configured baud rate, stop bits and parity.
 4. Go to the Windows device manager and find the COM port number for the connection. For example, go to the Start menu > Control Panel > Device Manager.

Double click the *Ports* icon to reveal the connected serial port devices and the COM

port for the each connected device.

If using USB, the baud rate, stop bit and parity settings can be viewed by right-clicking the connected device and selecting the *Properties* option.



5. Start Realterm on the PC as an administrator.
Click:
Start menu>All
Programs>RealTerm>realterm

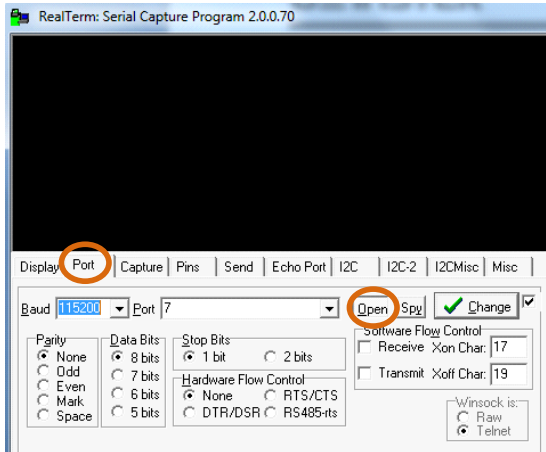
Tip: to run as an administrator, you can right click the Realterm icon in the Windows Start menu and select the *Run as Administrator* option.

6. After Realterm has started, click on the *Port* tab.

Enter the *Baud*, *Parity*, *Data bits*, *Stop bits* and *Port* number configuration for the connection.

The *Hardware Flow Control*, *Software Flow Control* options can be left at the default settings.

Press *Open* to connect to the ASR.



Note

For USB, the baud rate should be fixed to 115,200.

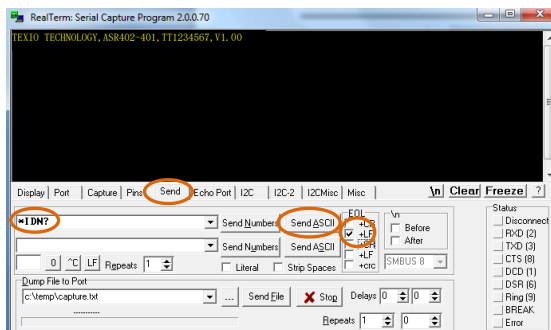
7. Click on the *Send* tab.

In the *EOL* configuration, check on the **+LF** check boxes.

Enter the query:

**idn?*

Click on *Send ASCII*.



8. The terminal display will return the following:

TEXIO TECHNOLOGY, ASRXXX-XXX,
XXXXXXXXXX, XX.XX

(manufacturer, model, serial number, software version)

9. If Realterm fails to connect to the ASR, please check all the cables and settings and try again.


1-4.GP-IB Interface

1-4-1. GPIB Remote Interface

GPIB Configuration

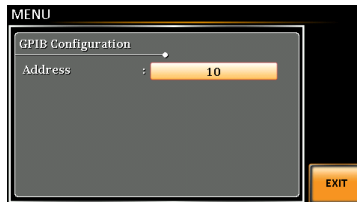
1. Connect a GPIB cable from the PC to the GPIB port on the rear panel.



2. Press the *Menu* key. The Menu setting will appear on the display. 
3. Use the scroll wheel to go to item 6, *GPIB* and press *Enter*.
4. Set the GPIB address.

GPIB Address 0 ~ 30 (10 by default)

GPIB Configuration



Only one GPIB address can be used at a time.

Exit

5. Press *Exit*[F4] to exit from the GPIB settings.



GPIB Constraints

- Maximum 15 devices altogether, 20m cable length, 2m between each device
- Unique address assigned to each device
- At least 2/3 of the devices turned On
- No loop or parallel connection



Note

The standard accessory does Not include GPIB data cable. Please purchase the additional CB-2420P which will meet your need for GPIB connection.

1-4-2. GPIB Function Check

Functionality Check

Please use the National Instruments Measurement & Automation Controller software to confirm GPIB/LAN functionality.

See the National Instrument website, <http://www.ni.com> for details.



Note

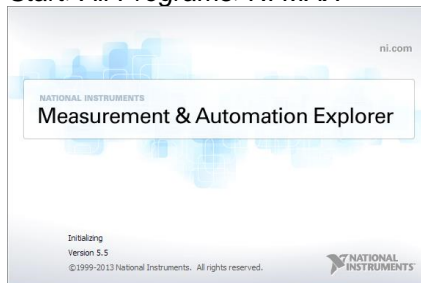
- Operating System: Windows

Operation

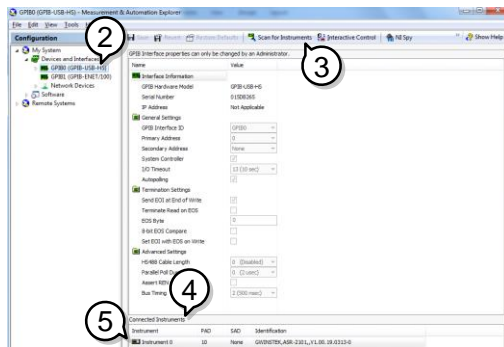
1. Start the NI Measurement and Automation Explorer (MAX) program. Using Windows, press:



Start>All Programs>NI MAX



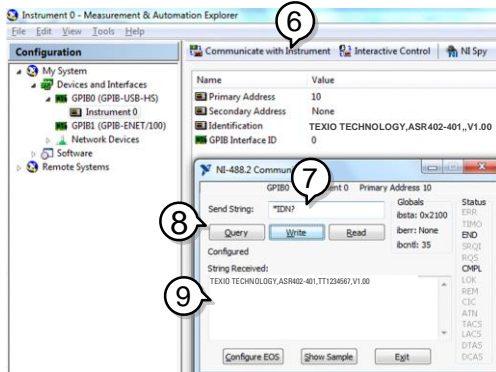
2. From the Configuration panel access; My System>Devices and Interfaces>GPIB0
3. Press the *Scan for Instruments* button.
4. In the *Connected Instruments* panel the ASR should be detected as *Instrument 0* with the address the same as that configured on the ASR.
5. Double click the *Instrument 0* icon.



6. Click on *Communicate with Instrument*.
7. Under the Communicator tab, ensure **IDN?* is written in the *Send String* text box.
8. Click on the *Query* button to send the **IDN?* query to the instrument.
9. The instrument identification string will be returned to the buffer area:

TEXIO TECHNOLOGY, ASRXXX-XXX,
XXXXXXXXXX, XX.XX

(manufacturer, model, serial number, software version)

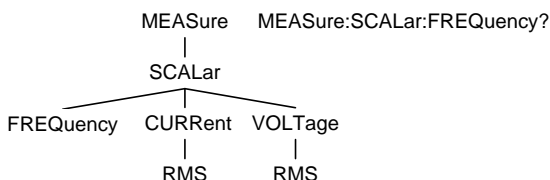


10. The function check is complete.

2. Command Syntax

| | | |
|---------------------|--|--|
| Compatible Standard | IEEE488.2 SCPI, 1999 | Partial compatibility Partial compatibility |
| Command Structure | <p>SCPI commands follow a tree-like structure, organized into nodes. Each level of the command tree is a node. Each keyword in a SCPI command represents each node in the command tree. Each keyword (node) of a SCPI command is separated by a colon (:).</p> | |

For example, the diagram below shows an SCPI sub-structure and a command example.



| | |
|---------------|---|
| Command types | <p>There are a number of different instrument commands and queries. A command sends instructions or data to the unit and a query receives data or status information from the unit.</p> |
|---------------|---|

Command types

| | |
|--------|---|
| Simple | A single command with/without a parameter |
|--------|---|

| | |
|---------|-------|
| Example | *IDN? |
|---------|-------|

| | |
|-------|--|
| Query | A query is a simple or compound command followed by a question mark (?). A parameter (data) is returned. |
|-------|--|

| | |
|---------|------------|
| Example | meas:curr? |
|---------|------------|


| | |
|----------|---|
| Compound | Two or more commands on the same command line. Compound commands are separated with either a semi-colon (;) or a semi-colon and a colon (;:). |
|----------|---|

A semi-colon is used to join two related commands, with the caveat that the last command must begin at the last node of the first command.

| | |
|---------|------------------|
| Example | meas:volt?;curr? |
|---------|------------------|

A semi-colon and colon are used to combine two commands from different nodes.

| | |
|---------|------------------------|
| Example | meas:volt?;:sour:volt? |
|---------|------------------------|

 **Note**
(Further explanation)

A semi-colon(;) is used to connect two commands. A colon(:) at the start of a command indicates that the command starts from the root node. The first command can ignore that first colon. Any commands after the first command (for compound commands) that do not begin with a colon, must begin at the last node of the first command.

Command
Forms

Commands and queries have two different forms, long and short. The command syntax is written with the short form of the command in capitals and the remainder (long form) in lower case.

The commands can be written in capitals or lower-case, just so long as the short or long forms are complete. An incomplete command will not be recognized.

Below are examples of correctly written commands.

| | |
|------------|--|
| Long form | :SYSTem:ERRor? :SYSTEM:ERROR? :system:error? |
| Short form | SYST:ERR? syst:err? |

Square Brackets

Commands that contain square brackets indicate that the contents are optional. The function of the command is the same with or without the square bracketed items, as shown below.

For example the query “:OUTPut[:STATe]?” has two valid forms, “:OUTPut:STATe?” and “:OUTPut?”.

Command
Format



1. Command header
 2. Space
 3. Parameter 1
 4. Comma (no space before/after comma)
 5. Parameter 2
-

| Parameters | Type | Description | Example |
|--|--------------|--|-----------------|
| | <Boolean> | Boolean logic | 0, 1 |
| | <NR1> | integers | 0, 1, 2, 3 |
| | <NR2> | decimal numbers | 0.1, 3.14, 8.5 |
| | <NR3> | floating point | 4.5e-1, 8.25e+1 |
| | <NRf> | any of NR1, 2, 3 | 1, 1.5, 4.5e-1 |
| | <block data> | Definitive length arbitrary block data. A single decimal digit followed by data. The decimal digit specifies how many 8-bit data bytes follow. | |
| About the return parameters of ASR series. | <bool> | +0,+1 | |
| | <NR1> | The number with a + sign. | |
| | <NR2> | The number with a + or -sign. The number after the decimal point is fixed at 4 digits. There are exceptions, so check each command. | |
| Message Terminator | LF | Line feed code | |

3.

3. Command List

3-1. Common Commands

3-1-1. *CLS

(Set) →

Description The *CLS command clears all the event registers, including the status byte, event status and error queue.

Syntax *CLS

3-1-2. *ESE

(Set) →

→ (Query)

Description Sets or queries the Standard Event Status Enable register.

Syntax *ESE <NR1>

Query Syntax *ESE?

Parameter <NR1> 0~255

Return parameter <NR1> Returns the bit sum of the Standard Event Status Enable register.

3-1-3. *ESR

→ (Query)

Description Queries the Standard Event Status (Event) register. The Event Status register is cleared after it is read.

Query Syntax *ESR?

Return parameter <NR1> Returns the bit sum of the Standard Event Status (Event) register and clears the register.

3-1-4. *IDN

→ (Query)

Description Queries the manufacturer, model name, serial number, and firmware version of the APS.

| | |
|------------------|---|
| Query Syntax | *IDN? |
| Return parameter | <string> Returns the instrument identification as a string in the following format: TEXIO TECHNOLOGY, ASRXXX-XXX, XXXXXXXXXX, XX.XX Manufacturer: TEXIO TECHNOLOGY Model number : ASRXXX-XXX Serial number : XXXXXXXXXX Firmware version : XX.XX |

3-1-5. *OPC

→ Query

| | |
|------------------|---|
| Description | The *OPC? Query returns 1 when all the outstanding commands have completed. |
| Syntax | *OPC |
| Query Syntax | *OPC? |
| Return parameter | 1 Returns 1 when all the outstanding commands have completed. |

3-1-6. *RCL

Set →

| | |
|-------------|---|
| Description | Recalls the contents stored in memory slot M0 ~ M9. These memory slots are mapped to the preset settings. |
| Syntax | *RCL {<NR1> MINimum MAXimum} |
| Parameter | <NR1> 0 ~ 9 (as memory M0 ~ M9) MIN Recalls the M0 memory contents. MAX Recalls the M9 memory contents. |

3-1-7. *RST

Set →

| | |
|-------------|---|
| Description | Performs a device reset. Configures the unit to a known configuration (default settings). This known configuration is independent of the usage history. |
| Syntax | *RST |

3-1-8. *SAV

Set →

Description Saves the settings into memory slot M0 ~ M9. These memory slots are mapped to the preset settings.

Syntax *SAV {<NR1>|MINimum|MAXimum}

Return parameter <NR1> 0 ~ 9 (as memory M0 ~ M9)

MIN Saves to the M0 memory slot.

MAX Saves to the M9 memory slot.

3-1-9. *SRE

Set →

→ Query

Description Sets or queries the Service Request Enable register. The Service Request Enable register determines which registers of the Status Byte register are able to generate service requests.

Syntax *SRE <NR1>

Query Syntax *SRE?

Parameter <NR1> 0~255

Return parameter <NR1> Returns the bit sum of the Service Request Enable register.

3-1-10. *STB

→ Query

Description Queries the bit sum of the Status Byte register with MSS (Master summary Status) replacing the RQS bit (bit 6).

Query Syntax *STB?

Return parameter <NR1> Returns the bit sum of the Status Byte register with the MSS bit (bit 6).

3-1-11. *WAI

Set →

Description Prevents any other commands or queries from being executed until all outstanding commands have completed.

Syntax *WAI

3-2. Trace/Data Commands



Note

The TRACE and DATA mode for the following commands are functionally equivalent.

3-2-1. :DATA|TRACe:SEQuence:CLEAr

Set →

Description Clears the sequence data for the selected save memory (Seq0 ~ Seq9).

Syntax :DATA|TRACe:SEQuence:CLEAr
{<NR1>|MINimum|MAXimum}

Parameter <NR1> 0~9
MIN 0
MAX 9

Example :DATA:SEQ:CLE 1

Clears the sequence data from Seq1.

3-2-2. :DATA|TRACe:SEQuence:RECall

Set →

Description Loads the sequence data. This command is the equivalent to recalling a sequence memory in the Sequence mode.

Syntax :DATA|TRACe:SEQuence:RECall
{<NR1>|MINimum|MAXimum}

Parameter <NR1> 0~9 (Seq0 ~ Seq9).
MIN 0
MAX 9

Example :DATA:SEQ:REC 1

Loads the data from Seq1.


3-2-3. :DATA|TRACe:SEQuence:STORe

Set →

Description Saves the sequence data. This command is the equivalent to saving a sequence memory in Sequence mode.

Syntax :DATA|TRACe:SEQuence:STORe
{<NR1>|MINimum|MAXimum}


Parameter <NR1> 0~9 (Seq0 ~ Seq9).
MIN 0
MAX 9

Example :DATA:SEQ:STOR 1
Saves the data from Seq1.
3-2-4. :DATA|TRACe:SIMulation:CLEar 

Description Clears the simulation data for the selected save memory (SIM0 ~ SIM9).

Syntax :DATA|TRACe:SIMulation:CLEar
{<NR1>|MINimum|MAXimum}


Parameter <NR1> 0~9 (SIM0 ~ SIM9).
MIN 0
MAX 9

Example :DATA:SIM:CLE 1
Clears the simulation data from SIM1.
3-2-5. :DATA|TRACe:SIMulation:RECall 

Description Loads the simulation data. This command is the equivalent to recalling a simulation memory in the Simulation mode (SIM0~SIM9).

Syntax :DATA|TRACe:SIMulation:RECall
{<NR1>|MINimum|MAXimum}

Parameter <NR1> 0~9 (SIM0 ~ SIM9).
MIN 0
MAX 9

Example :DATA:SIM:REC 1
Loads the data from SIM1.
3-2-6. :DATA|TRACe:SIMulation:STORE 

Description Saves the simulation data. This command is the equivalent saving a simulation memory in Simulation mode (SIM0 ~ SIM9).

Syntax :DATA|TRACe:SIMulation:STORE
{<NR1>|MINimum|MAXimum}

Parameter <NR1> 0~9 (SIM0 ~ SIM9).
MIN 0
MAX 9

Example :DATA:SIM:STOR 1
Saves the data from SIM1.

3-2-7. :DATA|TRACe:WAVe:CLEAr

Set →

Description Clears the ARB 1-16 data for the selected wave group.

Syntax :DATA|TRACe:WAVe:CLEAr
{<NR1>|MINimum|MAXimum}

Parameter <NR1> 1~16 (ARB1 ~ ARB16).
MIN Minimum
MAX Maximum

Example :DATA:WAV:CLE 13
Clears the wave data from ARB13.

3-2-8. :DATA|TRACe:WAVe[:DATA]

Set →

Description Sets the arbitrary wave.

Syntax :DATA|TRACe:WAVe[:DATA] {<NR1>|<Binary Data>}

Parameter <NR1> 1 – 16 (ARB 1 – 16)
Binary Data includes the #48192<DAB>...<DAB>
Indicates the block data is sent.
4 Indicates the number of subsequent numbers.
8192 Indicates the number of subsequent byte data.
<DAB>..<DAB> > Indicates 16-bit with 4096 words waveform data. Plus, the data format of wave is the big endian in the form of two's complement.

Example TRAC:WAV 1, #48192<DAB>...<DAB>

3-3.Measure Commands

3-3-1. :MEASure[:SCALar]:CURRent:CFACtor

→ Query

Description Returns the output current crest factor (CF).

Query syntax :MEASure[:SCALar]:CURRent:CFACtor?

| | | |
|---|---|--------------------------------------|
| Return parameter | <NR2> | Returns the crest factor. |
| 3-3-2. :MEASure[:SCALar]:CURRent:HIGH | | → (Query) |
| Description | Returns the output current maximum peak value (Imax). | |
| Note: | Current maximum peak value is defined as the highest peak value in the complete period. | |
| Query syntax | :MEASure[:SCALar]:CURRent:HIGH? | |
| Return parameter | <NR2> | Returns the Imax value in amps. |
| 3-3-3. :MEASure[:SCALar]:CURRent:LOW | | → (Query) |
| Description | Returns the output current minimum value (Imin). | |
| Note: | Current minimum value is defined as the lowest value in the complete period. | |
| Query syntax | :MEASure[:SCALar]:CURRent:LOW? | |
| Return parameter | <NR2> | Returns the Imin value in amps. |
| 3-3-4. :MEASure[:SCALar]:CURRent:PEAK:CLEAr | | (Set) → |
| Description | Clears the current peak-hold value. | |
| Syntax | :MEASure[:SCALar]:CURRent:PEAK:CLEAr | |
| 3-3-5. :MEASure[:SCALar]:CURRent:PEAK:HOLD | | → (Query) |
| Description | Returns the current peak hold value in amps (IPK Hold). | |
| Query syntax | :MEASure[:SCALar]:CURRent:PEAK:HOLD? | |
| Return parameter | <NR2> | Returns the peak hold value in amps. |
| 3-3-6. :MEASure[:SCALar]:CURRent[:RMS] | | → (Query) |
| Description | Returns the output current (Irms). | |
| Query syntax | :MEASure[:SCALar]:CURRent[:RMS]? | |

| | | |
|--|-------|-------------------------|
| Return parameter | <NR2> | Returns the Irms value. |
| 3-3-7. :MEASure[:SCALar]:CURRent:AVERAge → Query | | |

| | | |
|--------------|---|--|
| Description | Returns the current average value (Iavg). | |
| Query syntax | :MEASure[:SCALar]:CURRent:AVERAge? | |

| | | |
|---|-------|--|
| Return parameter | <NR2> | Returns the current average value in amps. |
| 3-3-8. :MEASure[:SCALar]:CURRent:HARMonic[:RMS] → Query | | |

| | | |
|-------------|---|--|
| Description | Returns 101 values covering Total and order 1 to 100 current (Irms) in harmonic. (Only AC-INT and 50 /60 Hz Active) | |
|-------------|---|--|

| | | |
|--------------|---|--|
| Query syntax | :MEASure[:SCALar]:CURRent:HARMonic[:RMS]? | |
|--------------|---|--|

| | | |
|------------------|------------------------------------|---|
| Return parameter | <NR2>,<NR2>,<NR2>...,<NR2>... etc. | Returns the entire 101 values containing Total and order 1 to 100 current (Irms) in harmonic. |
|------------------|------------------------------------|---|

| | | |
|---|--|--|
| 3-3-9. :MEASure[:SCALar]:CURRent:HARMonic:RATio → Query | | |
|---|--|--|

| | | |
|-------------|--|--|
| Description | Returns 101 values covering Total and order 1 to 100 current (Ratio) in harmonic. (Only AC-INT and 50 /60 Hz Active) | |
|-------------|--|--|

| | | |
|--------------|---|--|
| Query syntax | :MEASure[:SCALar]:CURRent:HARMonic:RATio? | |
|--------------|---|--|

| | | |
|------------------|------------------------------------|--|
| Return parameter | <NR2>,<NR2>,<NR2>...,<NR2>... etc. | Returns the entire 101 values containing Total and order 1 to 100 current (Ratio) in harmonic. |
|------------------|------------------------------------|--|

| | | |
|---|--|--|
| 3-3-10. :MEASure[:SCALar]:FREQuency → Query | | |
|---|--|--|

| | | |
|-------------|---|--|
| Description | Returns the SYNC signal source frequency in Hz. (Only AC+DC-sync or AC-sync Active) | |
|-------------|---|--|

| | | |
|--------------|------------------------------|--|
| Query syntax | :MEASure[:SCALar]:FREQuency? | |
|--------------|------------------------------|--|

| | | |
|------------------|-------|-----------------------------------|
| Return parameter | <NR2> | Returns the SYNC frequency in Hz. |
|------------------|-------|-----------------------------------|

3-3-11. :MEASure[:SCALar]:POWER[:AC]:
APParent

→ Query

Description Returns the apparent power (S).

Query syntax :MEASure[:SCALar]:POWER[:AC]:APParent?

Return parameter <NR2> Returns the apparent power in VA.

3-3-12. :MEASure[:SCALar]:POWER[:AC]:PFACTOR

→ Query

Description Returns the power factor (PF).

Query syntax :MEASure[:SCALar]:POWER[:AC]:PFACTOR?

Return parameter <NR2> Returns the power factor.

3-3-13. :MEASure[:SCALar]:POWER[:AC]:
REACTIVE

→ Query

Description Returns the reactive power (Q).

Query syntax :MEASure[:SCALar]:POWER[:AC]:REACTIVE?

Return parameter <NR2> Returns the reactive power in VAR.

3-3-14. :MEASure[:SCALar]:POWER[:AC][:REAL]

→ Query

Description Returns the active power in Watts (P).

Query syntax :MEASure[:SCALar]:POWER[:AC][:REAL]?

Return parameter <NR2> Returns the power in Watts.

3-3-15. :MEASure[:SCALar]:VOLTage[:RMS]

→ Query

Description Returns the voltage (Vrms).

Query syntax :MEASure[:SCALar]:VOLTage[:RMS]?

Return parameter <NR2> Returns the voltage in Vrms.

3-3-16. :MEASure[:SCALar]:VOLTage:AVERAge

→ Query

Description Returns the voltage average value (Vavg).

Query syntax :MEASure[:SCALar]:VOLTage:AVERAge?

| | | |
|--|-------|---|
| Return parameter | <NR2> | Returns the voltage average value in volts. |
| 3-3-17. :MEASure[:SCALar]:VOLTage:HIGH → Query | | |

| | | |
|-------------|---|--|
| Description | Returns the output voltage maximum peak value (Vmax). | |
|-------------|---|--|

| | | |
|-------|---|--|
| Note: | Voltage maximum peak value is defined as the highest peak value in the complete period. | |
|-------|---|--|

| | | |
|--------------|---------------------------------|--|
| Query syntax | :MEASure[:SCALar]:VOLTage:HIGH? | |
|--------------|---------------------------------|--|

| | | |
|---|-------|----------------------------------|
| Return parameter | <NR2> | Returns the Vmax value in volts. |
| 3-3-18. :MEASure[:SCALar]:VOLTage:LOW → Query | | |

| | | |
|-------------|--|--|
| Description | Returns the output current minimum value (Vmin). | |
|-------------|--|--|

| | | |
|-------|--|--|
| Note: | Voltage minimum value is defined as the lowest value in the complete period. | |
|-------|--|--|

| | | |
|--------------|--------------------------------|--|
| Query syntax | :MEASure[:SCALar]:VOLTage:LOW? | |
|--------------|--------------------------------|--|

| | | |
|--|-------|----------------------------------|
| Return parameter | <NR2> | Returns the Vmin value in volts. |
| 3-3-19. :MEASure[:SCALar]:VOLTage:HARMonic[:RMS] → Query | | |

| | | |
|-------------|---|--|
| Description | Returns 101 values covering Total and order 1 to 100 voltage (Vrms) in harmonic. (Only AC-INT and 50 /60 Hz Active) | |
|-------------|---|--|

| | | |
|--------------|--|--|
| Query syntax | :MEASure[:SCALar]: VOLTage:HARMonic[:RMS]? | |
|--------------|--|--|

| | | |
|------------------|------------------------------------|---|
| Return parameter | <NR2>,<NR2>,>,<NR2>,<NR2>..., etc. | Returns the entire 101 values containing Total and order 1 to 100 voltage (Vrms) in harmonic. |
|------------------|------------------------------------|---|

| | | |
|--|--|--|
| 3-3-20. :MEASure[:SCALar]:VOLTage:HARMonic:RATio → Query | | |
|--|--|--|

| | | |
|-------------|--|--|
| Description | Returns 101 values covering Total and order 1 to 100 voltage (Ratio) in harmonic. (Only AC-INT and 50 /60 Hz Active) | |
|-------------|--|--|

| | | |
|--------------|--|--|
| Query syntax | :MEASure[:SCALar]: VOLTage:HARMonic:RATio? | |
|--------------|--|--|

| | | |
|------------------|--|--|
| Return parameter | <NR2>,<NR2 >,<NR2>,<NR2>...,<NR2>... etc. | Returns the entire 101 values containing Total and order 1 to 100 voltage (Ratio) in harmonic. |
|------------------|--|--|

(Set) →

3-3-21. :MEASure:CONFigure:SENSing

→ (Query)

| | | |
|------------------|--|-------------------------------------|
| Description | Sets or queries the remote sense configuration. (Only AC-INT, DC-INT, AC-SYNC Mode and 100V, 200V Range and SIN Wave Shape and Time Slew Rate Mode Active) | |
| Syntax | :MEASure:CONFigure:SENSing {<bool> OFF ON} | |
| Query syntax | :MEASure:CONFigure:SENSing? | |
| Parameter | OFF 0 | Turns the remote sense off. |
| | ON 1 | Turns the remote sense on. |
| Return parameter | <bool> | Returns the status of remote sense. |
| Example | :MEAS:CONF:SENS 0 Sets the remote sense off. | |

(Set) →

3-3-22. :MEASure:AVERage:COUNt

→ (Query)

| | | |
|--------------|--|----------------------------------|
| Description | Sets or queries the average count of measurements. | |
| Syntax | :MEASure:AVERage:COUNt {<NR1> MINimum MAXimum} | |
| Query syntax | :MEASure:AVERage:COUNt? | |
| Parameter | <NR1> | 1 ~ 128 Average count value |
| | MINimum | 1 |
| | MAXimum | 128 |
| Return | <NR1> | Returns the average count value. |
| Example | :MEAS:AVER:COUN 10 Sets the average count 10. | |

(Set) →

3-3-23. :MEASure:UPDate:RATE

→ (Query)

| | |
|-------------|--|
| Description | Sets or queries the measurement update rate. |
|-------------|--|

| | | |
|------------------|--|--|
| Syntax | :MEASure:UPDate:RATE {FAST 0.1 0.25 0.5 1 2 5 10 20} | |
| Query Syntax | :MEASure:UPDate:RATE? | |
| Parameter | FAST | Fastest update rate |
| Return parameter | <NR2> | 0.1 0.25 0.5 1 2 5 10 20 sec |
| Example | :MEAS:UPD:RATE 2 Set the update rate to 2 seconds. | |

3-4.Memory Commands

3-4-1. :MEMory:RCL

Set →

| | | |
|-------------|--|-----|
| Description | Recalls the settings from memory slot M0~M9. These memory slots are mapped to the preset settings. Equivalent to the *RCL command. | |
| Syntax | :MEMory:RCL {<NR1> MINimum MAXimum} | |
| Parameter | <NR1> | 0~9 |
| | MINimum | 0 |
| | MAXimum | 9 |
| Example | :MEMory:RCL Recall the settings to M1. | |

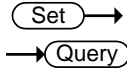
3-4-2. :MEMory:SAV

Set →

| | | |
|-------------|--|-----|
| Description | Saves the settings into memory slot M0 ~ M9. These memory slots are mapped to the preset settings. Equivalent to the *SAV command. | |
| Syntax | :MEMory:SAV {<NR1> MINimum MAXimum} | |
| Parameter | <NR1> | 0~9 |
| | MINimum | 0 |
| | MAXimum | 9 |
| Example | :MEMory:SAV 1 Save the settings to M1. | |

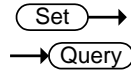
3-5. Output Commands

3-5-1. :OUTPut[:STATe]



| | | |
|------------------|---|--|
| Description | Sets or queries the output state of power source. | |
| Syntax | :OUTPut[:STATe] {<bool> OFF ON} | |
| Query Syntax | :OUTPut[:STATe]? | |
| Parameter | OFF 0 | Turns the output off. |
| | ON 1 | Turns the output on. |
| Return parameter | <bool> | Returns output status of the instrument. |
| Example | :OUTP 0 Sets power output off. | |

3-5-2. :OUTPut:PON



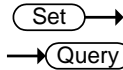
| | | |
|------------------|---|--|
| Description | Sets the output state at power-on. | |
| Syntax | :OUTPut:PON {<NR1> OFF ON SEQ SIM} | |
| Return Syntax | :OUTPut:PON? | |
| Parameter | <NR1> | 0 ~ 3 |
| | OFF 0 | Disabled |
| | ON 1 | Enabled |
| | SEQ 2 | Sequence function |
| | SIM 3 | Simulate function |
| Return parameter | <NR1> | Returns the selected output state at power-on from +0 to +3. |
| Example | :OUTPut:PON 2 Sets sequence function on at power-on. | |

3-5-3. :OUTPut:PROTEction:CLEAR



| | | |
|-------------|---------------------------|--|
| Description | Clears the machine error. | |
| Syntax | :OUTPut:PROTEction:CLEAR | |

3-5-4. :OUTPut:RELAy



| | | |
|------------------|---|---|
| Description | Sets or queries the output relay of power source. | |
| Syntax | :OUTPut:RELAy {<bool> OFF ON} | |
| Query Syntax | :OUTPut:RELAy? | |
| Parameter | OFF 0 | Turns the output relay off. |
| | ON 1 | Turns the output relay on. |
| Return parameter | <bool> | Returns output relay of the instrument. |
| Example | :OUTP:REL 1 Sets output relay on. | |

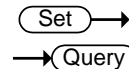
3-6. Status Commands

3-6-1. :STATus:OPERation:CONDition



| | | |
|-------------|--|--|
| Description | Queries the Operation Status register. This query will not clear the register. | |
| Syntax | :STATus:OPERation:CONDition? | |
| Return | <NR1> | Returns the bit sum of the Operation Condition register. (+0~+32767) |

3-6-2. :STATus:OPERation:ENABLE



| | | |
|------------------|--|-----------|
| Description | Sets or queries the bit sum of the Operation Status Enable register. | |
| Syntax | :STATus:OPERation:ENABLE <NR1> | |
| Query Syntax | :STATus:OPERation:ENABLE? | |
| Parameter | <NR1> | 0~32767 |
| Return parameter | <NR1> | +0~+32767 |

3-6-3. :STATus:OPERation[:EVENT]

→ Query

Description Queries the Operation Status Event register and clears the contents of the register.

Syntax :STATus:OPERation[:EVENT]?

Return <NR1> Returns the bit sum of the Operation Status Event register.

3-6-4. :STATus:OPERation:NTRansition

Set →

→ Query

Description Sets or queries the bit sum of the negative transition filter of the Operation Status register.

Syntax :STATus:OPERation:NTRansition <NR1>

Query Syntax :STATus:OPERation:NTRansition?

Parameter <NR1> 0~32767

Return parameter <NR1> +0~+32767

3-6-5. :STATus:OPERation:PTRansition

Set →

→ Query

Description Sets or queries the bit sum of the positive transition filter of the Operation Status register.

Syntax :STATus:OPERation:PTRansition <NR1>

:STATus:OPERation:PTRansition?

Parameter <NR1> 0~32767

Return parameter <NR1> +0~+32767

3-6-6. :STATus:QUESTionable[:EVENT]

→ Query

Description Queries the bit sum of the Questionable Status Event register. This query will also clear the contents of the register.

Query Syntax :STATus:QUESTionable[:EVENT]?

Return parameter <NR1> +0~+32767
 3-6-7. :STATus:QUESTionable:CONDition → Query

Description Queries the status (bit sum) of the Questionable Status register. This query will not clear the register.

Query Syntax :STATus:QUESTionable:CONDition?

Return parameter <NR1> +0~+32767
 3-6-8. :STATus:QUESTionable:ENABle Set →
 → Query

Description Sets or queries the bit sum of the Questionable Status Enable register.

Syntax :STATus:QUESTionable:ENABle <NR1>

Query Syntax :STATus:QUESTionable:ENABle?

Parameter <NR1> 0~32767

Return parameter <NR1> +0~+32767
 3-6-9. :STATus:QUESTionable:NTRansition Set →
 → Query

Description Sets or queries the bit sum of the negative transition filter of the Questionable Status register.

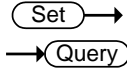
Syntax :STATus:QUESTionable:NTRansition <NR1>

Query Syntax :STATus:QUESTionable:NTRansition?

Parameter <NR1> 0~32767

Return parameter <NR1> +0~+32767

3-6-10. :STATus:QUESTIONable:PTRansition



| | |
|------------------|--|
| Description | Sets or queries the bit sum of the positive transition filter of the Questionable Status register. |
| Syntax | :STATus:QUESTIONable:PTRansition <NR1> |
| Return Syntax | :STATus:QUESTIONable:PTRansition? |
| Parameter | <NR1> 0~32767 |
| Return parameter | <NR1> +0~+32767 |

3-6-11. :STATus:PRESet



Description This command resets the ENABLE register, the PTRansition filter and NTRansition filter on the Operation Status, Questionable Status, Warning Status and System Lock Status Registers. The registers/filters will be reset to a default value.

| Default Register/Filter Values | Setting |
|---|---------|
| QUESTIONable Status Enable | 0x0000 |
| QUESTIONable Status Positive Transition | 0x7FFF |
| QUESTIONable Status Negative Transition | 0x0000 |
| Operation Status Enable | 0x0000 |
| Operation Status Positive Transition | 0x7FFF |
| Operation Status Negative Transition | 0x0000 |
| WARNing Status Enable | 0x0000 |
| WARNing Status Positive Transition | 0x7FFF |
| WARNing Status Negative Transition | 0x0000 |
| System Lock Status Enable | 0x0000 |
| System Lock Status Positive Transition | 0x7FFF |
| System Lock Status Negative Transition | 0x0000 |

Summary: The Questionable Status Enable registers, the Operation Status Enable registers, Warning Status registers and System Lock Status registers are both reset to 0.

The Questionable Status, Operation Status, Warning Status and System Lock Status Positive Transition filters are all set high (0x7FFF) and the Negative Transition filters are all set low (0x0000). I.e., only positive transitions will be recognized for the Questionable Status, Operation Status, Warning Status and System Lock Status registers.

Syntax :STATus:PRESet
 3-6-12. :STATus:WARNing:CONDition → Query

Description Queries the Warning Status register. This query will not clear the register.

Syntax :STATus:WARNing:CONDition?

Return <NR1> Returns the bit sum of the Warning Condition register. (+0~+32767)

3-6-13. :STATus:WARNing:ENABLE → Set → Query

Description Sets or queries the bit sum of the Warning Status Enable register.

Syntax :STATus:WARNing:ENABLE <NR1>

Query Syntax :STATus:WARNing:ENABLE?

Parameter <NR1> 0~32767

Return parameter <NR1> +0~+32767

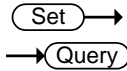
3-6-14. :STATus:WARNing[:EVENT] → Query

Description Queries the Warning Status Event register and clears the contents of the register.

Syntax :STATus:WARNing[:EVENT]?

Return parameter <NR1> Returns the bit sum of the Warning Status Event register.

3-6-15. :STATus:WARNing:NTRansition



Description Sets or queries the bit sum of the negative transition filter of the Warning Status register.

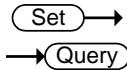
Syntax :STATus:WARNing:NTRansition <NR1>

Query Syntax :STATus:WARNing:NTRansition?

Parameter <NR1> 0~32767

Return parameter <NR1> +0~+32767

3-6-16. :STATus:WARNing:PTRansition



Description Sets or queries the bit sum of the positive transition filter of the Warning Status register.

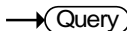
Syntax :STATus:WARNing:PTRansition <NR1>

:STATus:WARNing:PTRansition?

Parameter <NR1> 0~32767

Return parameter <NR1> +0~+32767

3-6-17. :STATus:LOCK:CONDition



Description Queries the System Lock Status register. This query will not clear the register.

Syntax :STATus:LOCK:CONDition?

Return parameter <NR1> Returns the bit sum of the System Lock Status register. (+0~+32767)

3-6-18. :STATus:LOCK:ENABLE

Set →
→ Query

Description Sets or queries the bit sum of the System Lock Status Enable register.

Syntax :STATus:LOCK:ENABLE <NR1>

Query Syntax :STATus:LOCK:ENABLE?

Parameter <NR1> 0~32767

Return parameter <NR1> +0~+32767

3-6-19. :STATus:LOCK[:EVENT]

→ Query

Description Queries the System Lock Status Event register and clears the contents of the register.

Syntax :STATus:LOCK [:EVENT]?

Return parameter <NR1> Returns the bit sum of the System Lock Status Event register.

3-6-20. :STATus:LOCK:NTRansition

Set →
→ Query

Description Sets or queries the bit sum of the negative transition filter of the System Lock Status register.

Syntax :STATus:LOCK:NTRansition <NR1>

Query Syntax :STATus:LOCK:NTRansition?

Parameter <NR1> 0~32767

Return parameter <NR1> +0~+32767

3-6-21. :STATus:LOCK:PTRansition

Set →
→ Query

Description Sets or queries the bit sum of the positive transition filter of the System Lock Status register.

| | |
|------------------|---|
| Syntax | :STATus:LOCK:PTRansition <NR1> :STATus:LOCK:PTRansition? |
| Parameter | <NR1> 0~32767 |
| Return parameter | <NR1> +0~+32767 |

3-7. System Function Commands

3-7-1. :SYSTem:ACIN:DETEction

Set →

→ Query

| | | |
|------------------|--|---|
| Description | Sets or queries AC input detection on/off. | |
| Syntax | :SYSTem:ACIN:DETEction {<bool> OFF ON} | |
| Query Syntax | :SYSTem:ACIN:DETEction? | |
| Parameter | OFF 0 ON 1 | Turns the AC input detection off. Turns the AC input detection on. |
| Return parameter | <bool> | Returns the AC input detection status. |

3-7-2. :SYSTem:ARBITrary:EDIT:BUILtin

Set →

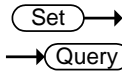
→ Query

| | | |
|------------------------------|---|--|
| Description | Sets or queries the built in function of arbitrary edit | |
| Syntax | :SYSTem:ARBITrary:EDIT:BUILtin TRlangle STAir CLIP CFACtor1 CFACtor2 SURGe DST<01 22> | |
| Query Syntax | :SYSTem:ARBITrary:EDIT:BUILtin? | |
| Parameter / Return parameter | TRlangle STAir CLIP CFACtor1 CFACtor2 SURGe DST<01 22> | Built In Triangle Wave Function Built In Stair Wave Function Built In Clip Wave Function Built In CF-1 Wave Function Built In CF-2 Wave Function Built In Surge Wave Function Built In DST01 ~ DST22 Wave Function |

Example :SYST:ARB:EDIT:BUILD? TRI

Returns the built in function of arbitrary edit

3-7-3. :SYSTEM:ARbitrary:EDIT:SURGe



Description Sets or queries the type and ACV and site parameter for built in Surge wave function

Syntax :SYSTEM:ARbitrary:EDIT:SURGe <NR1> | SQU |
 Query Syntax SIN, <NR1> | MINimum | MAXimum, <NR1> |
 MINimum | MAXimum
 :SYSTEM:ARbitrary:EDIT:SURGe?

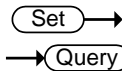
| | | |
|------------------|---------------------|--|
| Parameter | SQU 0 | Square waveform type |
| <Type> | SIN 1 | Sine waveform type |
| Parameter | <NR1> | ACV Ratio : 0 ~100(0 ~ 100%) |
| <ACV> | MINimum | Minimum ACV Ratio : 0 (0%) |
| | MAXimum | Maximum ACV Ratio : 100 (100%) |
| Parameter | <NR1> | Site Ratio : 0 ~100(0 ~ 100%) |
| <Site> | MINimum | Minimum Site Ratio : 0 (0%) |
| | MAXimum | Maximum Site Ratio : 100 (100%) |
| Return parameter | <Type>,<ACV>,<Site> | Returns the type and ACV and site parameter for built in Surge wave function |

Example :SYST:ARB:EDIT:SURG?


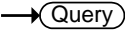
SIN,+50,+25

Returns the type and ACV and site parameter for built in Surge wave function

3-7-4. :SYSTEM:ARbitrary:EDIT:STAIR



Description Sets or queries the stair parameter for built in stair wave function

| | | |
|--|--|--|
| Syntax | :SYSTem:ARBitrary:EDIT:STAir <NR1> | |
| Query Syntax | MINimum MAXimum | |
| | :SYSTem:ARBitrary:EDIT:STAir? [MINimum | |
| | MAXimum]? | |
| Parameter | <NR1> | stair : 1 ~ 100 |
| | MINimum | Minimum stair : 1 |
| | MAXimum | Maximum stair : 100 |
| Return parameter | <NR1> | Returns the stair parameter for built in stair wave function |
| Example | :SYST:ARB:EDIT:STA? +5 Returns the stair parameter for built in stair wave function | |
| 3-7-5. :SYSTem:ARBitrary:EDIT:CFACTOR2 |  | |
| |  | |
| Description | Sets or queries the crest factor parameter for built in CF-2 wave function | |
| Syntax | :SYSTem:ARBitrary:EDIT:CFACTOR2 <NR2> | |
| Query Syntax | MINimum MAXimum | |
| | :SYSTem:ARBitrary:EDIT:CFACTOR2? [MINimum | |
| | MAXimum]? | |
| Parameter | <NR2> | crest factor : 1.5 ~ 2.0 |
| | MINimum | Minimum crest factor : 1.5 |
| | MAXimum | Maximum crest factor : 2.0 |
| Return parameter | <NR2> | Returns the crest factor parameter for built in CF-2 wave function |
| Example | :SYST:ARB:EDIT:CFAC2? +1.5000 Returns the crest factor parameter for built in CF-2 wave function | |

3-7-6. :SYSTem:ARBitrary:EDIT:CFACtor1

Set →
 → Query

| | | |
|------------------|--|--|
| Description | Sets or queries the crest factor parameter for built in CF-1 wave function | |
| Syntax | :SYSTem:ARBitrary:EDIT:CFACtor1 <NR2> | |
| Query Syntax | MINimum MAXimum :SYSTem:ARBitrary:EDIT:CFACtor1? [MINimum MAXimum]? | |
| Parameter | <NR2> | crest factor : 1.1 ~ 10.0 |
| | MINimum | Minimum crest factor : 1.1 |
| | MAXimum | Maximum crest factor : 10.0 |
| Return parameter | <NR2> | Returns the crest factor parameter for built in CF-1 wave function |
| Example | :SYST:ARB:EDIT:CFAC1? +2.0000 Returns the crest factor parameter for built in CF-1 wave function | |

3-7-7. :SYSTem:ARBitrary:EDIT:CLIP

Set →
 → Query

| | | |
|------------------|--|---|
| Description | Sets or queries the ratio parameter for built in clip wave function | |
| Syntax | :SYSTem:ARBitrary:EDIT:CLIP <NR2> MINimum | |
| Query Syntax | MAXimum :SYSTem:ARBitrary:EDIT:CLIP? [MINimum MAXimum]? | |
| Parameter | <NR2> | clip ratio : 0.00 ~ 1.00 |
| | MINimum | Minimum clip ratio : 0.00 |
| | MAXimum | Maximum clip ratio : 1.00 |
| Return parameter | <NR2> | Returns the ratio parameter for built in clip wave function |
| Example | :SYST:ARB:EDIT:CLIP? +0.5000 Returns the ratio parameter for built in clip wave function | |

3-7-8. :SYSTem:ARBitrary:EDIT:STORE

Set →

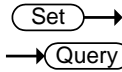
| | |
|-------------|---|
| Description | Saves the waveform data of built in into ARB1 ~ ARB16 |
|-------------|---|

Syntax :SYSTem:ARBitrary:EDIT:STORe <NR1> | ARB1 | ARB2 | ARB3 | ARB4 | ARB5 | ARB6 | ARB7 | ARB8 | ARB9 | ARB10 | ARB11 | ARB12 | ARB13 | ARB14 | ARB15 | ARB16

| | | |
|-----------|------------|--|
| Parameter | ARB1 0 | Saves the waveform data of built in into ARB1 |
| | ARB2 1 | Saves the waveform data of built in into ARB2 |
| | ARB3 2 | Saves the waveform data of built in into ARB3 |
| | ARB4 3 | Saves the waveform data of built in into ARB4 |
| | ARB5 4 | Saves the waveform data of built in into ARB5 |
| | ARB6 5 | Saves the waveform data of built in into ARB6 |
| | ARB7 6 | Saves the waveform data of built in into ARB7 |
| | ARB8 7 | Saves the waveform data of built in into ARB8 |
| | ARB9 8 | Saves the waveform data of built in into ARB9 |
| | ARB10 9 | Saves the waveform data of built in into ARB10 |
| | ARB11 10 | Saves the waveform data of built in into ARB11 |
| | ARB12 11 | Saves the waveform data of built in into ARB12 |
| | ARB13 12 | Saves the waveform data of built in into ARB13 |
| | ARB14 13 | Saves the waveform data of built in into ARB14 |
| | ARB15 14 | Saves the waveform data of built in into ARB15 |
| | ARB16 15 | Saves the waveform data of built in into ARB16 |

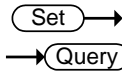
Example :SYST:ARB:EDIT:STOR ARB1
Saves the waveform data of built in into ARB1

3-7-9. :SYSTem:ARBitrary:EDIT:TRlangle



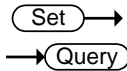
| | | |
|------------------|--|--|
| Description | Sets or queries the symmetry parameter for built in triangle wave function | |
| Syntax | :SYSTem:ARBitrary:EDIT:TRlangle <NR1> | |
| Query Syntax | MINimum MAXimum :SYSTem:ARBitrary:EDIT:TRlangle? [MINimum MAXimum]? | |
| Parameter | <NR1> | Symmetry : 0 ~ 100(0 ~ 100%) |
| | MINimum | Minimum Symmetry : 0 (0%) |
| | MAXimum | Maximum Symmetry : 100 (100%) |
| Return parameter | <NR1> | Returns the symmetry parameter for built in triangle wave function |
| Example | :SYST:ARB:EDIT:TRI? +50 Returns the symmetry parameter for built in triangle wave function | |

3-7-10. :SYSTem:BEEPer:STATe



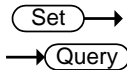
| | | |
|------------------|--|----------------------------|
| Description | Sets or queries the buzzer state on/off. | |
| Syntax | :SYSTem:BEEPer:STATe {<bool> OFF ON} | |
| Query Syntax | :SYSTem:BEEPer:STATe? | |
| Parameter | OFF 0 | Turns the buzzer off. |
| | ON 1 | Turns the buzzer on. |
| Return parameter | <bool> | Returns the buzzer status. |

3-7-11. :SYSTem:COMMunicate:GPIB[:SELF]
:ADdResS



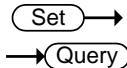
| | |
|------------------|---|
| Description | Sets or queries the GPIB address. |
| Note: | The setting will only be valid after the power has been cycled. |
| Syntax | :SYSTem:COMMunicate:GPIB[:SELF]:ADdResS <NR1> |
| Query Syntax | :SYSTem:COMMunicate:GPIB[:SELF]:ADdResS? |
| Parameter | <NR1> 0~30 |
| Return parameter | <NR1> +0~+30 |
| Example | SYST:COMM:GPIB:ADDR 15 Sets the GPIB address to 15. |

3-7-12. :SYSTem:COMMunicate:LAN:DHCP



| | |
|------------------|---|
| Description | Turns DHCP on/off. Queries the DHCP status. |
| Note: | The setting will only be valid after the power has been cycled. |
| Syntax | :SYSTem:COMMunicate:LAN:DHCP {<bool> OFF ON} |
| Query Syntax | :SYSTem:COMMunicate:LAN:DHCP? |
| Parameter | OFF 0 DHCP off ON 1 DHCP on |
| Return parameter | <bool> Returns the DHCP status. |

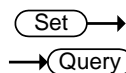
3-7-13. :SYSTem:COMMunicate:LAN:DNS



| | |
|--------------|---|
| Description | Sets or queries the DNS address. |
| Note: | The setting will only be valid after the power has been cycled. |
| Syntax | :SYSTem:COMMunicate:LAN:DNS <string> |
| Query Syntax | :SYSTem:COMMunicate:LAN:DNS? |

| | |
|--------------------|--|
| Parameter / Return | <string> DNS in string format ("mask") Applicable ASCII characters: 20H to 7EH |
| Example | SYST:COMM:LAN:DNS "172.16.1.252" Sets the DNS to 172.16.1.252. |

3-7-14. :SYSTEM:COMMunicate:LAN:GATEway

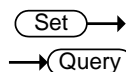


| | |
|-------------|---|
| Description | Sets or queries the Gateway address. |
| Note: | The setting will only be valid after the power has been cycled. |

| | |
|--------------------|---|
| Syntax | :SYSTem:COMMunicate:LAN:GATEway <string> |
| Query Syntax | :SYSTem:COMMunicate:LAN:GATEway? |
| Parameter / Return | <string> Gateway address in string format ("address") Applicable ASCII characters: 20H to 7EH |

| | |
|---------|--|
| Example | SYST:COMM:LAN:GATE "172.16.0.254" Sets the LAN gateway to 172.16.0.254. |
|---------|--|

3-7-15. :SYSTEM:COMMunicate:LAN:IPADdress



| | |
|-------------|---|
| Description | Sets or queries LAN IP address. |
| Note: | The setting will only be valid after the power has been cycled. |

| | |
|--------------------|--|
| Syntax | :SYSTem:COMMunicate:LAN:IPADdress <string> |
| Query Syntax | :SYSTem:COMMunicate:LAN:IPADdress? |
| Parameter / Return | <string> LAN IP address in string format ("address") Applicable ASCII characters: 20H to 7EH |

| | |
|---------|---|
| Example | SYST:COMM:LAN:IPAD "172.16.5.111" Sets the IP address to 172.16.5.111. |
|---------|---|

3-7-16. :SYSTEM:COMMunicate:LAN:MAC

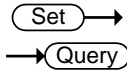


| | |
|-------------|--|
| Description | Returns the unit MAC address as a string. The MAC address cannot be changed. |
|-------------|--|

| | |
|------------------|--|
| Query Syntax | :SYSTem:COMMunicate:LAN:MAC? |
| Return parameter | <string> Returns the MAC address in the following format "FF-FF-FF-FF-FF-FF" |

Example SYST:COMM:LAN:MAC?
02-80-AD-20-31-B1
Returns the MAC address.

3-7-17. :SYSTem:COMMunicate:LAN:SMASk



Description Sets or queries the LAN subnet mask.

Note: The setting will only be valid after the power has been cycled.

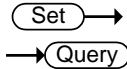
Syntax :SYSTem:COMMunicate:LAN:SMASk <string>

Query Syntax :SYSTem:COMMunicate:LAN:SMASk?

Parameter / Return <string> Subnet mask in string format ("mask")
Applicable ASCII characters: 20H to 7EH
parameter

Example SYST:COMM:LAN:SMASk "255.255.0.0"
Sets the LAN mask to 255.255.0.0.

3-7-18. :SYSTem:COMMunicate:RLState



Description Enables or disables local/remote state of the instrument.

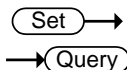
Syntax :SYSTem:COMMunicate:RLState
{LOCAl | REMote | RWLock | LREmote}

Query Syntax :SYSTem:COMMunicate:RLState?

Parameter / Return LOCAL All keys are valid. This instrument is
controlled by the front panel controls.
parameter REMote All keys are invalid, except for the [local]
key and the ability to turn the output off.
RWLock All keys are invalid. The instrument can
only be controlled remotely.
LREmote All keys are valid. This instrument is
controlled by the front panel controls and
remotely.

Example :SYST:COMM:RLST LOCAL
Sets the operating mode to local.

3-7-19. :SYSTem:COMMunicate:SERial
[:RECEive]:TRANsmite:BAUD



Description Sets or queries the UART baud rate.

Note: The setting will only be valid after the power has been cycled.

Syntax :SYSTem:COMMunicate:SERial[:RECeive]:TRANsmit:BAUD <NR1>

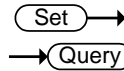
Query Syntax :SYSTem:COMMunicate:SERial[:RECeive]:TRANsmit:BAUD?

Parameter / Return <NR1> 1200, 2400, 4800, 9600, 19200, 38400, 57600, 115200

Example SYST:COMM:SER:TRAN:BAUD?
9600

Returns the baud rate settings.

3-7-20. :SYSTem:COMMunicate:SERial
[:RECeive]:TRANsmit:BITS



Description Sets or queries the UART number of data bits.

Note: The setting will only be valid after the power has been cycled.

Syntax :SYSTem:COMMunicate:SERial[:RECeive]:TRANsmit:BITS <NR1>

Query Syntax :SYSTem:COMMunicate:SERial[:RECeive]:TRANsmit:BITS?

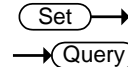
Parameter 0 7 bits
1 8 bits

Return parameter +0 7 bits
+1 8 bits

Example SYST:COMM:SER:TRAN:BITS?
>+1

Indicates that 8 data bits are used for the UART connection.

3-7-21. :SYSTem:COMMunicate:SERial
[:RECeive]:TRANsmit:PARity

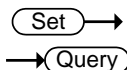


Description Sets or queries the parity of the UART connection.

Note: The setting will only be valid after the power has been cycled.

| | | |
|------------------|---|-------------|
| Syntax | :SYSTem:COMMunicate:SERial[:RECeive]:TRANsmit:PARity {NONE ODD EVEN} | |
| Query Syntax | :SYSTem:COMMunicate:SERial[:RECeive]:TRANsmit:PARity? | |
| Parameter | NONE | No parity |
| | ODD | Odd parity |
| | EVEN | Even parity |
| Return parameter | +0 | No parity |
| | +1 | Odd parity |
| | +2 | Even parity |
| Example | SYST:COMM:SER:TRAN:PARity? +0 Indicates that no parity is used for the UART connection. | |

3-7-22. :SYSTem:COMMunicate:SERial[:RECeive]:TRANsmit:SBITs



Description Sets or queries the number of stop bits used for the UART connection.

Note: The setting will only be valid after the power has been cycled.

Syntax :SYSTem:COMMunicate:SERial[:RECeive]:TRANsmit:SBITs <NR1>

Query Syntax :SYSTem:COMMunicate:SERial[:RECeive]:TRANsmit:SBITs?

| | | |
|-----------|---|-------------|
| Parameter | 0 | 1 stop bit |
| | 1 | 2 stop bits |

| | | |
|------------------|----|-------------|
| Return parameter | +0 | 1 stop bit |
| | +1 | 2 stop bits |

Example SYST:COMM:SER:TRAN:SBITs?
+1
Indicates that one stop bit is used for the UART connection.

3-7-23. :SYSTem:COMMunicate:TCPip:CONTRol



Description Queries the socket port number.

Query Syntax :SYSTem:COMMunicate:TCPip:CONTRol?

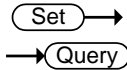
| | |
|---|--|
| Return parameter | <NR1> 0000 ~ 9999 |
| Example | SYST:COMM:TCP:CONT? 2268 Returns the socket port number. |
| 3-7-24. :SYSTEM:COMMunicate:USB:FRONT:STATE | → Query |

| | |
|--|---|
| Description | Queries the front panel USB-A port state. |
| Query Syntax | :SYSTEM:COMMunicate:USB:FRONT:STATE? |
| Return parameter | +0 <NR1>Absent +1 <NR1>Mass Storage |
| 3-7-25. :SYSTEM:COMMunicate:USB:REAR:STATE | Set → → Query |

| | |
|----------------------------------|---|
| Description | Queries the rear panel USB-B port state. |
| Query Syntax | :SYSTEM:COMMunicate:USB:REAR:STATE? |
| Return parameter | +0 <NR1>Absent +1 <NR1>Connected to the PC |
| 3-7-26. :SYSTEM:CONFigure[:MODE] | Set → → Query |

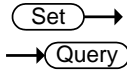
| | |
|------------------|---|
| Description | Sets or queries the test mode for the power supply. |
| Syntax | :SYSTEM:CONFigure[:MODE] {<NR1> CONTInuous SEQuence SIMulation} (SEQ is available for AC+DC-INT, AC-INT, DC-INT Modes, whilst SIM is available for AC+DC-INT Mode.) |
| Query Syntax | :SYSTEM:CONFigure[:MODE]? |
| Parameter | 0 CONTInuous Continuous mode (normal operating mode) 1 SEQuence Sequence mode 2 SIMulation Simulation mode |
| Return parameter | CONT Continuous mode (normal operating mode) SEQ Sequence mode SIM Simulation mode |

3-7-27. :SYSTem:CONFigure:EXTio[:STATe]



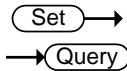
| | | |
|------------------|--|--------------------------------------|
| Description | Sets or queries the external control state on/off. | |
| Syntax | :SYSTem:CONFigure:EXTio[:STATe] | |
| Query Syntax | {<bool> OFF ON} | |
| | :SYSTem:CONFigure:EXTio[:STATe]? | |
| Parameter | OFF 0 | Turns the external control off. |
| | ON 1 | Turns the external control on. |
| Return parameter | <bool> | Returns the external control status. |

3-7-28. :SYSTem:CONFigure:TRIGger:OUTPut: SOURCE



| | | |
|------------------|--|----------------------------------|
| Description | Sets or queries the trigger output source. | |
| Syntax | :SYSTem:CONFigure:TRIGger:OUTPut:SOURCE <NR1> NONE ZERO-cross OUTPut-off | |
| Query Syntax | :SYSTem:CONFigure:TRIGger:OUTPut: SOURCE? | |
| Parameter | NONE 0 | No pulse output |
| | ZERO-cross 1 | Outputs pulse at zero cross (0°) |
| | OUTPut-off 2 | Outputs pulse when output is off |
| Return parameter | None | No pulse output |
| | Zero-Cross | Outputs pulse at zero cross (0°) |
| | Output-OFF | Outputs pulse when output is off |

3-7-29. :SYSTem:CONFigure:TRIGger:OUTPut: WIDTH



| | | |
|--------------|---|--|
| Description | Sets or queries the trigger signal output width. (Not available for DC-INT, AC+DC-EXT, AC-EXT.) | |
| Syntax | :SYSTem:CONFigure:TRIGger:OUTPut:WIDTH | |
| Query Syntax | <NR2> MINimum MAXimum | |
| | :SYSTem:CONFigure:TRIGger:OUTPut:WIDTH? | |

| | | |
|-----------|-----------------------------|--|
| Parameter | <NR2> MINimum MAXimum | Trigger signal output width. Minimum settable trigger signal output width. Maximum settable trigger signal output width. |
|-----------|-----------------------------|--|

Return parameter <NR2> Returns the trigger signal output width.
 3-7-30. :SYSTem:ERRor → Query

Description Queries the error queue. The last error message is returned. A maximum of 32 errors are stored in the error queue.

Query Syntax :SYSTem:ERRor?

Return parameter <string> Returns an error code followed by an error message as a single string.

Example SYSTem:ERRor?
-100, "Command error"

3-7-31. :SYSTem:ERRor:ENABle Set →

Description Clears the Error Queue and enables all error messages to be placed in the System Error Queue.

Syntax :SYSTem:ERRor:ENABle

3-7-32. :SYSTem:HOLD:STATe Set →
→ Query

Description Sets or queries the freeze hold state on/off.

Syntax :SYSTem:HOLD:STATe {<bool>|OFF|ON}

Query Syntax :SYSTem:HOLD:STATe?

Parameter OFF | 0 Turns the freeze hold off.
ON | 1 Turns the freeze hold on.

Return parameter <bool> Returns the freeze hold status.

3-7-33. :SYSTem:IPKHold:TIME

Set →
 → Query

| | | |
|------------------|--|-----------|
| Description | Sets or queries the lpeak hold time for peak current measurement when output on. | |
| Syntax | :SYSTem:IPKhold:TIME {<NR1>} | |
| Query Syntax | :SYSTem:IPKhold:TIME? | |
| Parameter | <NR1> | 1~60000 |
| Return parameter | <NR1> | +1~+60000 |
| Example | :SYST:IPKH:TIME 10 Sets the lpeak hold time 10ms to measure when output on. | |

3-7-34. :SYSTem:KLOCK

Set →
 → Query

| | | |
|------------------|---|------------------------------|
| Description | Enables or disables the front panel key lock. | |
| Syntax | :SYSTem:KLOCK {<bool> OFF ON} | |
| Query Syntax | :SYSTem:KLOCK? | |
| Parameter | OFF 0 | Panel keys unlocked |
| | ON 1 | Panel keys locked |
| Return parameter | <bool> | Returns the key lock status. |

3-7-35. :SYSTem:REBoot

Set →

| | | |
|-------------|-------------------------|--|
| Description | Reboots the ASR system. | |
| Syntax | :SYSTem:REBoot | |

3-7-36. :SYSTem:SCPI:DATA CLear

Set →

| | | |
|-------------|---------------------------|--|
| Description | Clear recorded SCPI data. | |
| Syntax | :SYSTem:SCPI:DATA CLear | |

3-7-37. :SYSTem:SCPI:DATA

→ Query

| | | |
|-------------|---------------------------|--|
| Description | Query recorded SCPI data. | |
|-------------|---------------------------|--|

Query Syntax :SYSTem:SCPI:DATA? {RS232 | USB | GPIB | LAN}

3-7-38. :SYSTem:SCPI:DATA? Error

→ Query

Description Queries SCPI command that caused SCPI error.

Query Syntax :SYSTem:SCPI:DATA? Error

3-7-39. :SYSTem:SLEW:MODE

Set →

→ Query

Description Sets or queries slew mode setting.

Syntax :SYSTem:SLEW:MODE {<bool>|TIME|SLOPe}

Query Syntax :SYSTem:SLEW:MODE?

Parameter TIME | 0 Sets the Time mode.

SLOPe | 1 Sets the Slope mode.

Return parameter <bool> Returns the slew mode setting.

Example :SYST:SLEW:MODE TIME

Sets the Time mode for slew mode.

3-7-40. :SYSTem:VUNit

Set →

→ Query

Description Sets or queries V unit setting.

Syntax :SYSTem:VUNit {<NR1>|RMS|P-P}

Query Syntax :SYSTem:VUNit?

Parameter RMS | 0 Sets the RMS.

P-P | 1 Sets the P-P.

Return parameter +0 The Unit of Voltage Setting is Vrms.

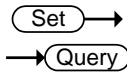
+1 The Unit of Voltage Setting is Vpp.

Example :SYST:VUN RMS

Sets the RMS for V unit.

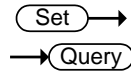
3-8. Source Commands

3-8-1. [:SOURce]:CURRent:LIMit:PEAK:HIGH



| | | |
|------------------|--|---|
| Description | Sets or queries the lpk-High Limit parameter for the continuous operation mode. | |
| Syntax | [:SOURce]:CURRent:LIMit:PEAK:HIGH {<NR2> MINimum MAXimum} | |
| Query Syntax | [:SOURce]:CURRent:LIMit:PEAK:HIGH? [MINimum MAXimum] | |
| Parameter | <NR2> MINimum MAXimum | lpk-High Limit in Arms. Minimum settable peak current high limit Maximum settable peak current high limit |
| Return parameter | <NR2> | Returns the lpk-High Limit value |
| Example | CURR:LIM:PEAK:HIGH? +42.0000 Returns the peak current high limit as 42.0A. | |

3-8-2. [:SOURce]:CURRent:LIMit:PEAK:LOW

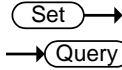


| | | |
|------------------|--|--|
| Description | Sets or queries the lpk-Low Limit parameter for the continuous operation mode. | |
| Syntax | [:SOURce]:CURRent:LIMit:PEAK:LOW {<NR2> MINimum MAXimum} | |
| Query Syntax | [:SOURce]:CURRent:LIMit:PEAK:LOW? | |
| Parameter | <NR2> MINimum MAXimum | lpk-Low Limit in Arms. Minimum settable peak current low limit Maximum settable peak current low limit |
| Return parameter | <NR2> | Returns the lpk-Low Limit value |

Example :CURR:LIM:PEAK:LOW?
-42.0000

Returns the peak current low limit as -42.0A.

3-8-3. [:SOURce]:CURRent:LIMit:RMS
[:AMPLitude]



Description Sets or queries the Irms parameter for the continuous operation mode.

Syntax [:SOURce]:CURRent:LIMit:RMS[:AMPLitude]
{<NR2>|MINimum|MAXimum}

Query Syntax [:SOURce]:CURRent:LIMit:RMS[:AMPLitude]?

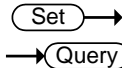
| | | |
|-----------|---------|--------------------------|
| Parameter | <NR2> | Irms in A. |
| | MINimum | Minimum settable current |
| | MAXimum | Maximum settable current |

| | | |
|------------------|-------|-------------------|
| Return parameter | <NR2> | Returns the Irms. |
|------------------|-------|-------------------|

Example :CURR:LIM:RMS?
+5.2500

Returns the Irms setting.

3-8-4. [:SOURce]:CURRent:LIMit:PEAK:MODE



Description Sets or queries lpk limit enabled or disabled.

Syntax [:SOURce]:CURRent:LIMit:PEAK:MODE
{<bool>|OFF|ON}

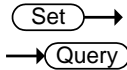
Query Syntax [:SOURce]:CURRent:LIMit:PEAK:MODE?

| | | |
|-----------|---------|---------------|
| Parameter | OFF 0 | lpk limit off |
| | ON 1 | lpk limit on |

| | | |
|------------------|----|---------------|
| Return parameter | +0 | lpk limit off |
| | +1 | lpk limit on |

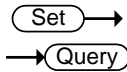
Example :CURR:LIM:PEAK:MODE ON
Sets lpk limit enabled.

3-8-5. [:SOURce]:CURRent:LIMit:RMS:MODE



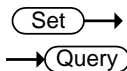
| | | |
|------------------|---|----------------|
| Description | Sets or queries IRMS OC-Fold enable. | |
| Syntax | [:SOURce]:CURRent:LIMit:RMS:MODE {<bool> OFF ON} | |
| Query Syntax | [:SOURce]:CURRent:LIMit:RMS:MODE? | |
| Parameter | OFF 0 | IRMS limit off |
| | ON 1 | IRMS limit on |
| Return parameter | +0 | IRMS limit off |
| | +1 | IRMS limit on |
| Example | :CURR:LIM:RMS:MODE ON Sets IRMS limit enabled. | |

3-8-6. [:SOURce]:FREQuency:LIMit:HIGH



| | | |
|------------------|--|-----------------------------|
| Description | Sets or queries the frequency upper limit range. (Only AC+DC-INT or AC-INT or AC+DC-ADD or AC-ADD Active) | |
| Syntax | [:SOURce]:FREQuency:LIMit:HIGH {<NR2> MINimum MAXimum} | |
| Query Syntax | [:SOURce]:FREQuency:LIMit:HIGH? | |
| Parameter | <NR2> | Frequency in Hz. |
| | MINimum | Minimum settable frequency |
| | MAXimum | Maximum settable frequency |
| Return parameter | <NR2> | Returns the frequency limit |
| Example | FREQ:LIM:HIGH? +60.5000 Returns the frequency upper limit. | |

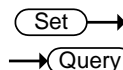
3-8-7. [:SOURce]:FREQuency:LIMit:LOW



| | | |
|-------------|--|--|
| Description | Sets or queries the frequency lower limit range. (Only AC+DC-INT or AC-INT or AC+DC-ADD or AC-ADD Active) | |
|-------------|--|--|

| | | |
|------------------|--|--|
| Syntax | [:SOURce]:FREQUency:LIMit:LOW {<NR2> MINimum MAXimum} | |
| Query Syntax | [:SOURce]:FREQUency:LIMit:LOW? | |
| Parameter | <NR2> MINimum MAXimum | Frequency in Hz. Minimum settable frequency Maximum settable frequency |
| Return parameter | <NR2> | Returns the frequency limit |
| Example | FREQ:LIM:LOW? +1.0000 Returns the frequency lower limit. | |

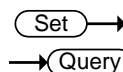
3-8-8. [:SOURce]:FREQUency[:IMMEDIATE]



| | | |
|------------------|---|--|
| Description | Sets or queries the frequency for the immediate trigger. (Only AC+DC-INT or AC-INT or AC+DC-ADD or AC-ADD Active) | |
| Syntax | [:SOURce]:FREQUency[:IMMEDIATE] {<NR2>(HZ) MINimum MAXimum} | |
| Query Syntax | [:SOURce]:FREQUency[:IMMEDIATE]? | |
| Parameter | <NR2> MINimum MAXimum | Frequency setting in Hz. Minimum frequency Maximum frequency |
| Return parameter | <NR2> | Returns the frequency. |

Example :FREQ 60
Sets the frequency of 60Hz.

3-8-9. [:SOURce]:FUNCTION[:SHAPE][:IMMEDIATE]

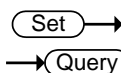


| | | |
|-------------|--|--|
| Description | Sets or queries the waveforms of power supply. (Not available for AC+DC-EXT or AC-EXT) | |
| Syntax | [:SOURce]:FUNCTION[:SHAPE][:IMMEDIATE] {<NR1> ARB1 ARB2 ARB3 ARB4 ARB5 ARB6 ARB7 ARB8 ARB9 ARB10 ARB11 ARB12 ARB13 ARB14 ARB15 ARB16 SIN SQU TRI} | |

| | | |
|--------------------|---|---|
| Query Syntax | [:SOURce]:FUNCtion[:SHAPE][:IMMEDIATE]? | |
| Parameter / Return | <NR1> | From 0 – 18, which represent different waveforms, respectively. Return parameter is <string>. |
| | ARB1 | Arbitrary wave 1 |
| | ARB2 | Arbitrary wave 2 |
| | ARB3 | Arbitrary wave 3 |
| | ARB4 | Arbitrary wave 4 |
| | ARB5 | Arbitrary wave 5 |
| | ARB6 | Arbitrary wave 6 |
| | ARB7 | Arbitrary wave 7 |
| | ARB8 | Arbitrary wave 8 |
| | ARB9 | Arbitrary wave 9 |
| | ARB10 | Arbitrary wave 10 |
| | ARB11 | Arbitrary wave 11 |
| | ARB12 | Arbitrary wave 12 |
| | ARB13 | Arbitrary wave 13 |
| | ARB14 | Arbitrary wave 14 |
| | ARB15 | Arbitrary wave 15 |
| | ARB16 | Arbitrary wave 16 |
| | SIN | Sin wave |
| | SQU | Square wave |
| | TRI | Triangle wave |

Example : SOUR:FUNC:SHAP:IMM?
 TRI
 Returns the waveform as Triangle wave.

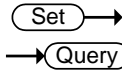
3-8-10. [:SOURce]:FUNCtion:THD:FORMat



| | | |
|------------------|---|----------------|
| Description | Sets or queries the THD format. | |
| Syntax | [:SOURce]:FUNCtion:THD:FORMat {<bool> IEC CSA} | |
| Query Syntax | [:SOURce]:FUNCtion:THD:FORMat? | |
| Parameter | IEC 0 | IEC THD format |
| | CSA 1 | CSA THD format |
| Return parameter | IEC | IEC THD format |
| | CSA | CSA THD format |

Example :SOUR:FUNC:THD:FORM?
IEC
Returns the THD format as IEC.

3-8-11. [:SOURce]:MODE



Description Sets or queries the output mode of power supply.

Syntax [:SOURce]:MODE
{<NR1>|ACDC-INT|AC-INT|DC-INT|ACDC-EXT|AC-EXT|ACDC-ADD|AC-ADD|ACDC-SYNC|AC-SYNC}

Query Syntax [:SOURce]:MODE?

Parameter / Return <NR1> From 0 – 8, which represent different output modes, respectively.
Return parameter is <string>.

ACDC-INT | 0 AC+DC-INT

AC-INT | 1 AC-INT

DC-INT | 2 DC-INT

ACDC-EXT | 3 AC+DC-EXT

AC-EXT | 4 AC-EXT

ACDC-ADD | 5 AC+DC-ADD

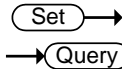
AC-ADD | 6 AC-ADD

ACDC-SYNC | 7 AC+DC-SYNC

AC-SYNC | 8 AC-SYNC

Example MODE?
ACDC-INT
Returns the output mode as AC+DC-INT.

3-8-12. [:SOURce]:PHASe:START:STATE



Description Sets or queries state of start phase. (Not available for DC-INT, AC+DC-EXT and AC-EXT)

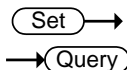
Syntax [:SOURce]:PHASe:START:STATE
{<bool>|FREE|FIXED}

Query Syntax [:SOURce]:PHASe:START:STATE?

| | | |
|------------------|--------------------------|-------------------|
| Parameter | FREE 0 | Start phase Free |
| | FIXED 1 | Start phase Fixed |
| Return parameter | FREE | Start phase Free |
| | FIXED | Start phase Fixed |
| Example | :PHAS:STAR:STAT? FREE | |

Returns the state of start phase as Free.

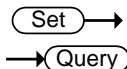
3-8-13. [:SOURce]:PHASe:STOP:STATe



| | | |
|------------------|---|-------------------|
| Description | Sets or queries state of stop phase. (Not available for DC-INT, AC+DC-EXT and AC-EXT) | |
| Syntax | [:SOURce]:PHASe:STOP:STATe {<bool> FREE FIXED} | |
| Query Syntax | [:SOURce]:PHASe:STOP:STATe? | |
| Parameter | FREE 0 | Start phase Free |
| | FIXED 1 | Start phase Fixed |
| Return parameter | FREE | Start phase Free |
| | FIXED | Start phase Fixed |
| Example | :PHAS:STOP:STAT? FIXED | |

Returns the state of stop phase as Fixed.

3-8-14. [:SOURce]:PHASe:STARt[:IMMEDIATE]

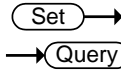


| | | |
|------------------|---|--------------------------------|
| Description | Sets or queries the start phase. (Not available for DC-INT, AC+DC-EXT and AC-EXT) | |
| Syntax | [:SOURce]:PHASe:STARt[:IMMEDIATE] {<NR2> MINimum MAXimum} | |
| Query Syntax | [:SOURce]:PHASe:STARt[:IMMEDIATE]? | |
| Parameter | <NR2> | Start phase value |
| | MINimum | 0.0 |
| | MAXimum | 359 .9 |
| Return parameter | <NR2> | Returns the start phase value. |

Example :PHAS:STAR 0

 Sets the starting phase to 0.

3-8-15. [:SOURce]:PHASe:STOP[:IMMEDIATE]



Description Sets or queries the off phase of the waveform.
(Not available for DC-INT, AC+DC-EXT and AC-EXT)

Note: Sets the off phase of the waveform after the output has been turned off.

Syntax [:SOURce]:PHASe:STOP[:IMMEDIATE]
{<NR2>|MINimum|MAXimum}

Query Syntax [:SOURce]:PHASe:STOP[:IMMEDIATE]?

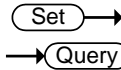
| | | |
|-----------|---------|------------------|
| Parameter | <NR2> | Stop phase value |
| | MINimum | 0 .0 |
| | MAXimum | 359 .9 |

| | | |
|------------------|-------|-------------------------------|
| Return parameter | <NR2> | Returns the stop phase value. |
|------------------|-------|-------------------------------|

Example :PHAS:STOP 60

 Sets the stop phase to 60.

3-8-16. [:SOURce]:PHASe:SYNC[:IMMEDIATE]



Description Sets or queries the sync phase of the waveform.
(Available for AC+DC-Sync and AC-Sync)

Syntax [:SOURce]:PHASe:SYNC[:IMMEDIATE]
{<NR2> | MINimum | MAXimum }

Query Syntax [:SOURce]:PHASe:SYNC[:IMMEDIATE]?

| | | |
|-----------|---------|------------------|
| Parameter | <NR2> | Sync phase value |
| | MINimum | 0 |
| | MAXimum | 359.9 |

| | | |
|------------------|-------|-------------------------------|
| Return parameter | <NR2> | Returns the sync phase value. |
|------------------|-------|-------------------------------|

Example :PHAS:SYNC 60

 Sets the sync phase to 60.

3-8-17. [:SOURce]:READ

→ Query

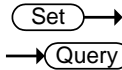
| | |
|------------------|---|
| Description | Returns the measurement readouts. |
| Query Syntax | [:SOURce]:READ? |
| Return parameter | <Vrms>,<Vavg>,<THDv>,<THDi> returns values in AC-INT mode only, whereas <Vmax>,<Vmin> returns Invalid in other modes. <Irms>,<lavg>,<lmax>,<lmin>,<l pkH>,<P>,<S>,<Q>,<PF>,<CF> returns Invalid in DC-INT mode. <S>,<Q>,<PF>,<CF> returns values in AC+DC-Sync and AC-Sync modes only, whereas <Freq> returns Invalid in other modes. |
| Example | :READ? >+0.3204,+0.0306,+0.1879,-0.5809,+0.0121, -0.0007, +0.0030, -0.0060, -0.0201, +0.0013, +0.0039, +0.0037, +0.3400, +1.1500, Invalid, Invalid, Invalid |

3-8-18. [:SOURce]:VOLTage:RANGe

Set →
→ Query

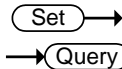
| | |
|--------------------|--|
| Description | Sets or queries the voltage range. |
| Syntax | [:SOURce]:VOLTage:RANGe {<NR1> 100 200 AUTO} |
| Query Syntax | [:SOURce]:VOLTage:RANGe? |
| Parameter / Return | <NR1> From 0 – 2, which represent different voltage ranges, respectively. Return parameter is 100,200 or AUTO. |
| | 100 100V |
| | 200 200V |
| | AUTO AUTO (Only AC+DC-INT or AC-INT or DC-INT or AC+DC-sync or AC-sync Active) |
| Example | :SOUR:VOLT:RANG? 200V Returns the voltage range as 200V. |

3-8-19. [:SOURce]:VOLTage:LIMit:RMS



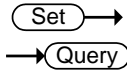
| | | |
|------------------|--|----------------------------|
| Description | Sets or queries the voltage limit for the continuous operation mode. (Only AC-INT or AC-ADD or AC-Sync Active) | |
| Syntax | [:SOURce]:VOLTage:LIMit:RMS {<NR2> MINimum MAXimum} | |
| Query Syntax | [:SOURce]:VOLTage:LIMit:RMS? | |
| Parameter | <NR2> | Vrms. |
| | MINimum | Minimum voltage limit |
| | MAXimum | Maximum voltage limit |
| Return parameter | <NR2> | Returns the voltage limit. |
| Example | VOLT:LIM:RMS? +350.0000 Returns the Vrms limit. | |

3-8-20. [:SOURce]:VOLTage:LIMit:HIGH



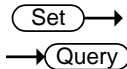
| | | |
|------------------|--|---------------------------------|
| Description | Sets or queries the voltage high limit. (Only AC+DC-INT or DC-INT or AC+DC-ADD or AC+DC-Sync Active) | |
| Syntax | [:SOURce]:VOLTage:LIMit:HIGH {<NR2> MINimum MAXimum} | |
| Query Syntax | [:SOURce]:VOLTage:LIMit:HIGH? | |
| Parameter | <NR2> | Voltage high limit |
| | MINimum | Minimum voltage high limit |
| | MAXimum | Maximum voltage high limit |
| Return parameter | <NR2> | Returns the voltage high limit. |
| Example | VOLT:LIM:HIGH? +500.0000 Returns the voltage high limit. | |

3-8-21. [:SOURce]:VOLTage:LIMit:LOW


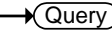


| | |
|------------------|---|
| Description | Sets or queries the voltage low limit. (Only AC+DC-INT or DC-INT or AC+DC-ADD or AC+DC-Sync Active) |
| Syntax | [:SOURce]:VOLTage:LIMit:LOW {<NR2> MINimum MAXimum} |
| Query Syntax | [:SOURce]:VOLTage:LIMit:LOW? |
| Parameter | <NR2> Voltage low limit MINimum Minimum voltage low limit MAXimum Maximum voltage low limit |
| Return parameter | <NR2> Returns the voltage low limit. |
| Example | VOLT:LIM:LOW? -500.0000 Returns the voltage low limit. |


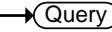
3-8-22. [:SOURce]:VOLTage:LIMit:PEAK



| | |
|------------------|---|
| Description | Sets or Queries the Value of Vpp in Specific Mode(AC-INT or AC-ADD or AC-Sync) and Wave Shape(TRI or ARB) and V Unit(p-p) |
| Syntax | [:SOURce]:VOLTage:LIMit:PEAK <NR2> MINimum MAXimum |
| Query Syntax | [:SOURce]:VOLTage:LIMit:PEAK? |
| Parameter | <NR2> Vp-p MINimum Minimum voltage MAXimum Maximum voltage |
| Return parameter | <NR2> Returns the voltage. |
| Example | VOLT:LIM:PEAK? +500.0000 Returns the Vp-p limit. |

3-8-23. [:SOURce]:VOLTage[:LEVel][:IMMediate]
[:AMPLitude]  

| | | |
|------------------|---|---|
| Description | Sets or queries the RMS voltage for the continuous operation mode. (Not available for DC-INT, AC+DC-EXT and AC-EXT) | |
| Syntax | [:SOURce]:VOLTage[:LEVel][:IMMediate][:AMPLitude] {<NR2>(V) MINimum MAXimum} | |
| Query Syntax | [:SOURce]:VOLTage[:LEVel][:IMMediate][:AMPLitude]? | |
| Parameter | <NR2> MINimum MAXimum | Vrms. Minimum voltage Maximum voltage |
| Return parameter | <NR2> | Returns the voltage. |
| Example | :VOLT 150.0 Sets the voltage to 150.0 ACV. | |

3-8-24. [:SOURce]:VOLTage[:LEVel][:IMMediate]:
OFFSet  

| | | |
|------------------|--|--|
| Description | Sets or queries the voltage offset value. (Only AC+DC-INT or DC-INT or AC+DC-ADD or AC+DC-Sync Active) | |
| Syntax | [:SOURce]:VOLTage[:LEVel][:IMMediate]:OFFSet {<NR2>(V) MINimum MAXimum} | |
| Query Syntax | [:SOURce]:VOLTage[:LEVel][:IMMediate]:OFFSet? | |
| Parameter | <NR2> MINimum MAXimum | Voltage offset value Minimum voltage offset value Maximum voltage offset value |
| Return parameter | <NR2> | Returns the voltage. |
| Example | :VOLT:OFFS? +150.0000 Returns the voltage offset value as 150.0. | |

3-9. Sequence Commands

3-9-1. [:SOURce]:SEQuence:CPARAmeter



| | | |
|--------------|---|---|
| Description | Sets the common parameters for the Sequence mode. Please see the user manual for a full description of each parameter. | |
| Syntax | [:SOURce]:SEQuence:CPARAmeter {<NR2>,<NR2>,<bool> OFF ON,<NR2>,<bool> OFF ON,<NR1> CONTInue END HOLD,<NR1>,<bool> OFF ON,<NR1>,<bool> OFF ON,<NR1>,<bool> OFF ON,<NR1>,<bool> OFF ON,<NR1>,<bool> OFF ON} | |
| Query Syntax | [:SOURce]:SEQuence:CPARAmeter? | |
| Parameter | <NR2> <NR2> <bool> OFF ON FREE FIXED <NR2> <bool> OFF ON FREE FIXED <NR1> CONTInue END HOLD <NR1> <bool> OFF ON <NR1> <NR1> <NR1> <bool> OFF ON <NR1> <bool> OFF ON <bool> OFF ON | Step Time On phase On phase off (free)(1) / on (fixed)(0) Off phase Off phase off (free) / on (fixed) Term settings: Continue(0)/End(1)/Hold(2) Jump step number (0 ~ 999) Jump on(1)/off(0) Jump Cnt (0~ 9999) Sync Code: LL(0) / LH(1) / HL(2) / HH(3) Branch1 (0 ~ 999) Branch1 on(1)/off(0) Branch2 (0 ~ 999) Branch2 on(1)/off(0) This parameter is w/o function. Fixed to 0. |



Set step 0 to "0" for the jump step number, jump count, branch 1 (step), and branch 2 (step). Anything other than 0 will result in an error.

| | |
|------------------|---|
| Return parameter | <NR2>,<NR2>,<bool>,<NR2>,<bool>,<NR1>,<NR1>,<bool>,<NR1>,<NR1>,<bool>,<NR1>,<bool>,<bool> |
| | Returns the common parameters in the following order: Step time, on phase, on phase on/off, off phase, off phase on/off, term settings, jump step number, jump on/off, jump count, code on/off, branch1, branch1 on/off, branch2, branch2 on/off, trig out on/off,+0. Time: Fixed to 4 digits after the decimal point. Phase: Fixed to 1 digit after the decimal point. |

Example1 :SEQ:CPAR 1,0,10,1,HOLD,10,1,0,1,0,0,0,1,0

Example2 :SEQ:CPAR?
+0.1000,+0,+0,+0,+0,CONT,+1,+1,+1,+0,+0,+0,+0,+0,+0

3-9-2. [:SOURCE]:SEQUENCE:CSTep → Query

| | |
|------------------|--|
| Description | Returns the currently running step number. |
| Query Syntax | [:SOURCE]:SEQUENCE:CSTep? |
| Return parameter | <NR1> Current step number |
| Example | :SEQ:CSTep? +1 |

3-9-3. [:SOURCE]:SEQUENCE:SPARAMeter Set →
→ Query

| | |
|--------------|---|
| Description | Sets or queries the parameters for a specified step. Depending on the output mode, some parameters may not be displayed on the screen, but those parameters cannot be omitted. |
| Syntax | [:SOURCE]:SEQUENCE:SPARAMeter {<NR2>,<NR1> CONST KEEP SWEp,<NR2>,<NR1> CONST KEEP SWEp,<NR2>,<NR1> CONST KEEP SWEp,SIN,<NR1>} |
| Query Syntax | [:SOURCE]:SEQUENCE:SPARAMeter? |
| Parameter | <NR2> ACV setting |

| | |
|-------------|--|
| <NR1> CONSt | ACV mode: Constant(0) |
| KEEp SWEEp | Keep(1) Sweep(2) |
| <NR2> | DCV setting |
| <NR1> CONSt | DCV mode: Constant(0) |
| KEEp SWEEp | Keep(1) Sweep(2) |
| <NR2> | Frequency |
| <NR1> CONSt | Frequency mode: Constant(0) |
| KEEp SWEEp | Keep(1) Sweep(2) |
| Waveform | ARB1 ARB2 ARB3 ARB4 ARB5 ARB6 ARB7 ARB8 ARB9 ARB10 ARB11 ARB12 ARB13 ARB14 ARB15 ARB16 SIN SQU TRI |
| <NR1> | Phase angle. Fixed to 0. |

| | |
|------------------|---|
| Return parameter | <NR2>,<NR1> CONSt KEEp SWEEp,<NR2>,<NR1> CONSt KEEp SWEEp,ARB1 ARB2 ARB3 ARB4 ARB5 ARB6 ARB7 ARB8 ARB9 ARB10 ARB11 ARB12 ARB13 ARB14 ARB15 ARB16 SIN SQU TRI,0 Returns the step parameters in the following order: ACV, ACV mode, DCV, DCV mode, frequency, frequency mode, wave, phase. ACV,DCV: Fixed to 1 digit after the decimal point, Frequency: Fixed to 2 digits after the decimal point |
|------------------|---|

Example :SEQ:SPAR?
+101.0,KEEP,+0.0,CONST,+50.00,CONST,SIN,0

3-9-4. [:SOURce]:SEQuence:STEP

Set →

→ Query

| | | |
|------------------|--|--------------------------|
| Description | Sets or queries the current step number. | |
| Syntax | [:SOURce]:SEQuence:STEP {<NR1> MINimum MAXimum} | |
| Query Syntax | [:SOURce]:SEQuence:STEP? [MINimum MAXimum] | |
| Parameter | <NR1> | Step number |
| | MINimum | Minimum step number |
| | MAXimum | Maximum step number |
| Return parameter | <NR1> | Returns the step number. |

Example :SEQ:STEP 1
 Sets the step number to 1.
 3-9-5. [:SOURce]:SEQuence:CONDition → Query

| | | | |
|------------------|---|-------------------------|----------------|
| Description | Returns the sequence status.(Only Sequence Mode Active) | | |
| Query Syntax | [:SOURce]:SEQuence:CONDition? | | |
| Return parameter | <NR1> | Current sequence status | +0 (Idle mode) |
| | | | +1 (Run mode) |
| | | | +2 (Hold mode) |

Example :SEQ:COND?
 +1
 3-9-6. :TRIGger:SEQuence:SELEcted:EXECute → Set

| | | | |
|-------------|--|-----------------------------|--|
| Description | Sets to execute actions for sequence mode | | |
| Syntax | :TRIGger:SEQuence:SELEcted:EXECute {STOP START HOLD BRAN1 BRAN2} | | |
| Parameter | STOP | Stops sequence execution | |
| | START | Starts sequence execution | |
| | HOLD | Holds sequence execution | |
| | BRAN1 | Jumps to Branch 1 execution | |
| | BRAN2 | Jumps to Branch 2 execution | |

Example TRIG:SEQ:SEL:EXEC STAR
 Starts sequence execution.

3-10. Simulate Commands(Only Simulation Mode Active)

3-10-1. [:SOURce]:SIMulation:CONDition →(Query)

| | | | |
|------------------|---------------------------------|---------------------------|---|
| Description | Returns the simulation status. | | |
| Query Syntax | [:SOURce]:SIMulation:CONDition? | | |
| Return parameter | <NR1> | Current simulation status | +0 (Idle mode) +1 (Run mode) +2 (Hold mode) |
| Example | :SIM:COND? +1 | | |

3-10-2. [:SOURce]:SIMulation:ABNormal:CODE (Set)→ →(Query)

| | | | |
|------------------|---|--|--|
| Description | Sets the external trigger output for the abnormal step parameter. This option is only applicable when in the Simulation mode. | | |
| Syntax | [:SOURce]:SIMulation:ABNormal:CODE {<NR1> MINimum MAXimum} | | |
| Query Syntax | [:SOURce]:SIMulation:ABNormal:CODE? [MINimum MAXimum] | | |
| Parameter | <NR1> | External trigger output, 0=LL, 1=LH, 2=HL, 3=HH. | |
| | MINimum | 0 (LL) | |
| | MAXimum | 3 (HH) | |
| Return parameter | <NR1> | Returns the external trigger output. | |
| Example | SIM:ABN:CODE 1 | | |

3-10-3. [:SOURce]:SIMulation:ABNormal:FREQue ncy (Set)→ →(Query)

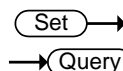
| | | | |
|-------------|--|--|--|
| Description | Sets or queries the frequency of the abnormal step of the simulation mode. | | |
| Syntax | [:SOURce]:SIMulation:ABNormal:FREQuency {<NR2> MINimum MAXimum} | | |

| | | |
|------------------|--|--|
| Query Syntax | [:SOURce]:SIMulation:ABNormal:FREQuency? | |
| Parameter | <NR2> | Frequency of abnormal step |
| | MINimum | Minimum frequency |
| | MAXimum | Maximum frequency |
| Return parameter | <NR2> | Returns the frequency of abnormal step. Fixed to 2 digits after the decimal point. |

Example :SIM:ABN:FREQ 55

Sets the frequency to 55Hz.

3-10-4. [:SOURce]:SIMulation:ABNormal:PHASe:START:ENABLE

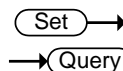


| | | |
|------------------|--|----------|
| Description | Enables/Disables (Fixed/Free) the ON Phs parameter of the abnormal step for the Simulation mode. | |
| Syntax | [:SOURce]:SIMulation:ABNormal:PHASe:START:ENABLE {<bool> OFF ON FREE FIXED} | |
| Query Syntax | [:SOURce]:SIMulation:ABNormal:PHASe:START:ENABLE? | |
| Parameter | OFF 0 FREE | Disabled |
| | ON 1 FIXED | Enabled |
| Return parameter | +0 | Disabled |
| | +1 | Enabled |

Example :SIM:ABN:PHAS:STAR:ENAB 1

Enable the ON Phs.

3-10-5. [:SOURce]:SIMulation:ABNormal:PHASe:START[:IMMediate]


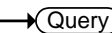


| | | |
|--------------|--|----------------------|
| Description | Sets or queries the ON Phs parameter of the abnormal step for the Simulation mode. | |
| Syntax | [:SOURce]:SIMulation:ABNormal:PHASe:START[:IMMediate] {<NR2> MINimum MAXimum} | |
| Query Syntax | [:SOURce]:SIMulation:ABNormal:PHASe:START[:IMMediate]? | |
| Parameter | <NR2> | ON Phs (start phase) |
| | MINimum | 0.0 |
| | MAXimum | 359.9 |

| | | |
|------------------|-------|---|
| Return parameter | <NR2> | Returns the ON Phs (start phase). Fixed to 1 digit after the decimal point. |
|------------------|-------|---|

Example :SIM:ABN:PHAS:STAR 0

Sets ON Phs to 0.

3-10-6. [:SOURce]:SIMulation:ABNormal:PHASe: STOP:ENABLE  

| | | |
|-------------|---|--|
| Description | Enables/Disables (Fixed/Free) the OFF Phs parameter of the abnormal step for the Simulation mode. | |
|-------------|---|--|


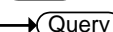
Syntax [:SOURce]:SIMulation:ABNormal:PHASe:STOP:ENABLE {<bool>|OFF|ON|FREE|FIXED }

Query Syntax [:SOURce]:SIMulation:ABNormal:PHASe:STOP:ENABLE?

| | | |
|------------------|----------------------------------|---------------------|
| Parameter | OFF 0 FREE ON 1 FIXED | Disabled Enabled |
| Return parameter | +0 +1 | Disabled Enabled |

Example :SIM:ABN:PHAS:STOP:ENAB 1

Enable the OFF Phs.

3-10-7. [:SOURce]:SIMulation:ABNormal:PHASe: STOP[:IMMEDIATE]  

| | | |
|-------------|---|--|
| Description | Sets or queries the OFF Phs parameter of the abnormal step for the Simulation mode. | |
|-------------|---|--|

Note: Sets the off phase of the waveform after the output has been turned off.

Syntax [:SOURce]:SIMulation:ABNormal:PHASe:STOP[:IMMEDIATE] {<NR2>|MINimum|MAXimum}

Query Syntax [:SOURce]:SIMulation:ABNormal:PHASe:STOP[:IMMEDIATE]?

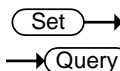
| | | |
|-----------|-----------------------------|------------------------------------|
| Parameter | <NR2> MINimum MAXimum | OFF Phs (Stop phase) 0 359.9 |
|-----------|-----------------------------|------------------------------------|

| | | |
|------------------|-------|---|
| Return parameter | <NR2> | Returns the OFF Phs (Stop phase). Fixed to 1 digit after the decimal point. |
|------------------|-------|---|

Example :SIM:ABN:PHAS:STOP 0

Sets OFF Phs to 0.

3-10-8. [:SOURce]:SIMulation:ABNormal:TIME



| | | |
|-------------|--|--|
| Description | Sets or queries the Time parameter of the abnormal step for the Simulation mode. | |
|-------------|--|--|

| | | |
|--------|--|--|
| Syntax | [:SOURce]:SIMulation:ABNormal:TIME {<NR2> MINimum MAXimum} | |
|--------|--|--|

| | | |
|--------------|-------------------------------------|--|
| Query Syntax | [:SOURce]:SIMulation:ABNormal:TIME? | |
|--------------|-------------------------------------|--|

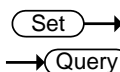
| | | |
|-----------|---------|--------------------------------------|
| Parameter | <NR2> | Time of the abnormal step in seconds |
| | MINimum | 0.0001 |
| | MAXimum | 999.9999 |

| | | |
|------------------|-------|--|
| Return parameter | <NR2> | Returns the time of the abnormal step. |
|------------------|-------|--|

Example :SIM:ABN:TIME 1

Sets the abnormal step time to 1 second.

3-10-9. [:SOURce]:SIMulation:ABNormal:VOLTage



| | | |
|-------------|--|--|
| Description | Sets or queries the Vset parameter of the abnormal step for the Simulation mode. | |
|-------------|--|--|

| | | |
|--------|---|--|
| Syntax | [:SOURce]:SIMulation:ABNormal:VOLTage {<NR2> MINimum MAXimum} | |
|--------|---|--|

| | | |
|--------------|--|--|
| Query Syntax | [:SOURce]:SIMulation:ABNormal:VOLTage? | |
|--------------|--|--|

| | | |
|-----------|---------|-------------------------------|
| Parameter | <NR2> | Voltage of the abnormal step. |
| | MINimum | Minimum settable voltage |
| | MAXimum | Maximum settable voltage |

| | | |
|------------------|-------|---|
| Return parameter | <NR2> | Returns the voltage of the abnormal step. Fixed to 1 digit after the decimal point. |
|------------------|-------|---|

Example `:SIM:ABN:VOLT MAX`
 Sets the abnormal step voltage to the maximum.
 3-10-10. `[[:SOURce]:SIMulation:CSTep` → Query

| | | |
|------------------|---|---|
| Description | Returns the currently running step. | |
| Query Syntax | <code>[[:SOURce]:SIMulation:CSTep?</code> | |
| Return parameter | <NR1> | Current step +0 = Initial step +1 = Normal1 step +2 = Transition1 step +3 = Abnormal step +4 = Transition2 step +5 = Normal2 step |

Example `:SIM:CSTep?`
`+1`
 3-10-11. `[[:SOURce]:SIMulation:INITial:CODE` Set →
 → Query

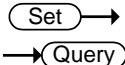
| | | |
|------------------|--|---|
| Description | Sets the external trigger output for the initial step parameter. This option is only applicable when in the Simulation mode. | |
| Syntax | <code>[[:SOURce]:SIMulation:INITial:CODE</code> <code>{<NR1> MINimum MAXimum}</code> | |
| Query Syntax | <code>[[:SOURce]:SIMulation:INITial:CODE?</code> | |
| Parameter | <NR1> | 0=LL, 1=LH, 2=HL, 3=HH |
| | MINimum | 0 (LL) |
| | MAXimum | 3 (HH) |
| Return parameter | <NR1> | Returns the external trigger output for the initial step. |

Example `SIM:INIT:CODE 1`
 3-10-12. `[[:SOURce]:SIMulation:INITial:FREQuency` Set →
 → Query

| | | |
|-------------|---|--|
| Description | Sets or queries the frequency of the initial step of the simulation mode. | |
|-------------|---|--|

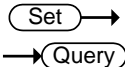
| | | |
|------------------|---|--|
| Syntax | [:SOURce]:SiMulation:INITial:FREQUency {<NR2> MINimum MAXimum} | |
| Query Syntax | [:SOURce]:SiMulation:INITial:FREQUency? | |
| Parameter | <NR2> MINimum MAXimum | Frequency of initial step Minimum frequency Maximum frequency |
| Return parameter | <NR2> | Returns the frequency of initial step. Fixed to 2 digits after the decimal point. |

Example :SIM:INIT:FREQ 60
Sets the frequency of the initial step to 60Hz.

3-10-13. [:SOURce]:SiMulation:INITial:PHASe:START:ENABle


| | | |
|------------------|---|---------------------|
| Description | Enables/Disables (Fixed/Free) the ON Phs parameter of the initial step for the Simulation mode. | |
| Syntax | [:SOURce]:SiMulation:INITial:PHASe:START:ENABle {<bool> OFF ON FREE FIXED} | |
| Query Syntax | [:SOURce]:SiMulation:INITial:PHASe:START:ENABle? | |
| Parameter | OFF 0 FREE ON 1 FIXED | Disabled Enabled |
| Return parameter | +0 +1 | Disabled Enabled |

Example :SIM:INIT:PHAS:STAR:ENAB 1
Enable the ON Phs.

3-10-14. [:SOURce]:SiMulation:INITial:PHASe:START[:IMMEDIATE]


| | | |
|--------------|---|--|
| Description | Sets or queries the ON Phs parameter of the initial step for the Simulation mode. | |
| Syntax | [:SOURce]:SiMulation:INITial:PHASe:START[:IMMEDIATE] {<NR2> MINimum MAXimum} | |
| Query Syntax | [:SOURce]:SiMulation:INITial:PHASe:START[:IMMEDIATE]? | |

| | | |
|------------------|-----------------------------|---|
| Parameter | <NR2> MINimum MAXimum | ON Phs (start phase) 0 359.9 |
| Return parameter | <NR2> | Retuns the ON Phs (start phase). Fixed to 1 digit after the decimal point. |

Example :SIM:INIT:PHAS:STAR 0

Sets ON Phs to 0.

3-10-15. [:SOURce]:SIMulation:INITial:PHASe:
STOP:ENABLE

Set →

→ Query

Description Enables/Disables (Fixed/Free) the OFF Phs parameter of the initial step for the Simulation mode.

Syntax [:SOURce]:SIMulation:INITial:PHASe:STOP:ENABle {<bool>|OFF|ON|FREE|FIXED }

Query Syntax [:SOURce]:SIMulation:INITial:PHASe:STOP:ENABle?

| | | |
|-----------|----------------------------------|---------------------|
| Parameter | OFF 0 FREE ON 1 FIXED | Disabled Enabled |
|-----------|----------------------------------|---------------------|

| | | |
|------------------|----------|---------------------|
| Return parameter | +0 +1 | Disabled Enabled |
|------------------|----------|---------------------|

Example :SIM:INIT:PHAS:STOP:ENAB 1

Enable the OFF Phs.

3-10-16. [:SOURce]:SIMulation:INITial:PHASe:
STOP[:IMMEDIATE]

Set →

→ Query

Description Sets or queries the OFF Phs parameter of the initial step for the Simulation mode.

Note: Sets the off phase of the waveform after the output has been turned off.

Syntax [:SOURce]:SIMulation:INITial:PHASe:STOP[:IMMEDIATE] {<NR2>|MINimum|MAXimum}

Query Syntax [:SOURce]:SIMulation:INITial:PHASe:STOP[:IMMEDIATE]?

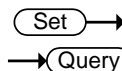
| | | |
|-----------|-----------------------------|------------------------------------|
| Parameter | <NR2> MINimum MAXimum | OFF Phs (Stop phase) 0 359.9 |
|-----------|-----------------------------|------------------------------------|

| | | |
|------------------|-------|---|
| Return parameter | <NR2> | Returns the OFF Phs (Stop phase). Fixed to 1 digit after the decimal point. |
|------------------|-------|---|

Example :SIM:INIT:PHAS:STOP 0

Sets OFF Phs to 0.

3-10-17. [:SOURce]:SIMulation:INITial:VOLTage



| | | |
|-------------|---|--|
| Description | Sets or queries the Vset parameter of the initial step for the Simulation mode. | |
|-------------|---|--|

| | | |
|--------|--|--|
| Syntax | [:SOURce]:SIMulation:INITial:VOLTage {<NR2> MINimum MAXimum} | |
|--------|--|--|

| | | |
|--------------|---------------------------------------|--|
| Query Syntax | [:SOURce]:SIMulation:INITial:VOLTage? | |
|--------------|---------------------------------------|--|

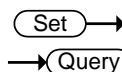
| | | |
|-----------|---------|------------------------------|
| Parameter | <NR2> | Voltage of the initial step. |
| | MINimum | Minimum settable voltage |
| | MAXimum | Maximum settable voltage |

| | | |
|------------------|-------|--|
| Return parameter | <NR2> | Returns the Voltage of the initial step. Fixed to 1 digit after the decimal point. |
|------------------|-------|--|

Example :SIM:INIT:VOLT MAX

Sets the initial step voltage to the maximum.

3-10-18. [:SOURce]:SIMulation:NORMal<1|2>: CODE



| | | |
|-------------|---|--|
| Description | Sets the external trigger output for the normal 1 or normal 2 step parameter. This option is only applicable when in the Simulation mode. | |
|-------------|---|--|

| | | |
|--------|---|--|
| Syntax | [:SOURce]:SIMulation:NORMal<1 2>:CODE {<NR1> MINimum MAXimum} | |
|--------|---|--|

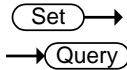
| | | |
|--------------|--|--|
| Query Syntax | [:SOURce]:SIMulation:NORMal<1 2>:CODE? | |
|--------------|--|--|

| | | |
|-----------|---------|------------------------|
| Parameter | <NR1> | 0=LL, 1=LH, 2=HL, 3=HH |
| | MINimum | 0 (LL) |
| | MAXimum | 3 (HH) |

| | | |
|------------------|-------|--|
| Return parameter | <NR1> | Returns the external trigger output for the normal 1 or normal 2 step. |
|------------------|-------|--|

Example SIM:NORM1:CODE 1

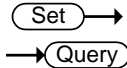
3-10-19. [:SOURce]:SIMulation:NORMal 1:
FREQUency



| | | |
|------------------|---|--|
| Description | Sets or queries the frequency of the normal1 step of the simulation mode. | |
| Syntax | [:SOURce]:SIMulation:NORMal 1:FREQUency {<NR2> MINimum MAXimum} | |
| Query Syntax | [:SOURce]:SIMulation:NORMal 1:FREQUency? | |
| Parameter | 1 <NR2> MINimum MAXimum | Normal 1 Frequency of abnormal step Minimum frequency Maximum frequency |
| Return parameter | <NR2> | Returns the frequency of abnormal step. Fixed to 2 digits after the decimal point. |

Example :SIM:NORM1:FREQ 60
Sets the frequency to 60Hz.

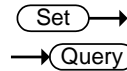
3-10-20. [:SOURce]:SIMulation:NORMal<1|2>:
PHASe:STARt:ENABle



| | | |
|------------------|--|---|
| Description | Enables/Disables (Fixed/Free) the ON Phs parameter of the normal1 or normal2 step for the Simulation mode. | |
| Syntax | [:SOURce]:SIMulation:NORMal<1 2>:PHASe:STARt:ENABle { <bool> OFF ON FREE FIXED} | |
| Query Syntax | [:SOURce]:SIMulation:NORMal<1 2>:PHASe:STARt:ENABle? | |
| Parameter | <1 2> OFF 0 FREE ON 1 FIXED | Normal 1 or Normal 2 Disabled Enabled |
| Return parameter | +0 +1 | Disabled Enabled |

Example :SIM:NORM1:PHAS:STAR:ENAB 1
Enable the ON Phs.

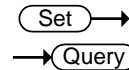
3-10-21. [:SOURCE]:SIMulation:NORMal<1|2>:
PHASe:STARt[:IMMediate]



| | | |
|------------------|--|---|
| Description | Sets or queries the ON Phs parameter of the normal1 or normal2 step for the Simulation mode. | |
| Syntax | [:SOURCE]:SIMulation:NORMal<1 2>:PHASe:STARt[:IMMediate] {<NR2> MINimum MAXimum} | |
| Query Syntax | [:SOURCE]:SIMulation:NORMal<1 2>:PHASe:STARt[:IMMediate]? | |
| Parameter | <1 2> | Normal 1 or Normal 2 |
| | <NR2> | ON Phs (start phase) |
| | MINimum | 0 |
| | MAXimum | 359.9 |
| Return parameter | <NR2> | Returns the ON Phs (start phase). Fixed to 1 digit after the decimal point. |

Example :SIM:NORM1:PHAS:STAR 0
Sets ON Phs to 0.

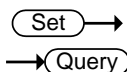
3-10-22. [:SOURCE]:SIMulation:NORMal<1|2>:
PHASe:STOP:ENABLE



| | | |
|------------------|---|----------------------|
| Description | Enables/Disables (Fixed/Free) the OFF Phs parameter of the normal1 or normal2 step for the Simulation mode. | |
| Syntax | [:SOURCE]:SIMulation:NORMal<1 2>:PHASe:STOP:ENABLE {<bool> OFF ON FREE FIXED} | |
| Query Syntax | [:SOURCE]:SIMulation:NORMal<1 2>:PHASe:STOP:ENABLE? | |
| Parameter | <1 2> | Normal 1 or Normal 2 |
| | OFF 0 FREE | Disabled |
| | ON 1 FIXED | Enabled |
| Return parameter | +0 | Disabled |
| | +1 | Enabled |

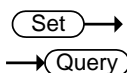
Example :SIM:NORM1:PHAS:STOP:ENAB 1
Enable the OFF Phs.

3-10-23. [:SOURce]:SIMulation:NORMal<1|2>:
PHASe:STOP[:IMMediate]



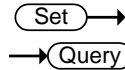
| | | |
|------------------|---|---|
| Description | Sets or queries the OFF Phs parameter of the normal1 or normal2 step for the Simulation mode. | |
| Note: | Sets the off phase of the waveform after the output has been turned off. | |
| Syntax | [:SOURce]:SIMulation:NORMal<1 2>:PHASe:STOP[:IMMediate] {<NR2> MINimum MAXimum} | |
| Query Syntax | [:SOURce]:SIMulation:NORMal<1 2>:PHASe:STOP[:IMMediate]? | |
| Parameter | <1 2> <NR2> MINimum MAXimum | Normal 1 or Normal 2 OFF Phs (Stop phase) 0 359.9 |
| Return parameter | <NR2> | Returns the OFF Phs (Stop phase). Fixed to 1 digit after the decimal point. |
| Example | :SIM:NORM1:PHAS:STOP 0 Sets OFF Phs to 0. | |

3-10-24. [:SOURce]:SIMulation:NORMal<1|2>:
TIME



| | | |
|------------------|--|---|
| Description | Sets or queries the Time parameter of the normal1 or normal2 step for the Simulation mode. | |
| Syntax | [:SOURce]:SIMulation:NORMal<1 2>:TIME {<NR2> MINimum MAXimum} | |
| Query Syntax | [:SOURce]:SIMulation:NORMal<1 2>:TIME? | |
| Parameter | <1 2> <NR2> MINimum MAXimum | Normal 1 or Normal 2 Time of the step in seconds 0.0001 999.9999 |
| Return parameter | <NR2> | Returns the time of the step. |
| Example | :SIM:NORM1:TIME 1 Sets the step time to 1 second. | |

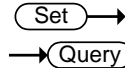
3-10-25. [:SOURce]:SIMulation:NORMal1:
VOLTage



| | | |
|------------------|---|---|
| Description | Sets or queries the Vset parameter of the normal1 step for the Simulation mode. | |
| Syntax | [:SOURce]:SIMulation:NORMal 1:VOLTage {<NR2> MINimum MAXimum} | |
| Query Syntax | [:SOURce]:SIMulation:NORMal 1:VOLTage? | |
| Parameter | 1 <NR2> MINimum MAXimum | Normal 1 Voltage of the abnormal step. Minimum settable voltage Maximum settable voltage |
| Return parameter | <NR2> | Returns the Voltage of the abnormal step. Fixed to 1 digit after the decimal point. |

Example :SIM:NORM1:VOLT MAX
Sets the normal1step voltage to the maximum.

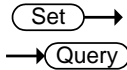
3-10-26. [:SOURce]:SIMulation:REPeat:COUNT



| | | |
|------------------|---|---|
| Description | Sets or queries the repeat count for the Simulation mode. | |
| Syntax | [:SOURce]:SIMulation:REPeat:COUNT {<NR1> MINimum MAXimum} | |
| Query Syntax | [:SOURce]:SIMulation:REPeat:COUNT? | |
| Parameter | <NR1> MINimum MAXimum | 0 ~ 9999 (0 = infinite loop) 0 9999 |
| Return parameter | <NR1> | +0 ~ +9999 (0 = infinite loop) |

Example :SIM:REP:COUN 1
Sets the repeat count to 1.

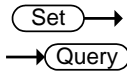
3-10-27. [:SOURce]:SIMulation:REPeat:ENABLE



| | | |
|------------------|--|---------------------|
| Description | Turns the repeat function on or off for the Simulation mode. | |
| Syntax | [:SOURce]:SIMulation:REPeat:ENABLE {<bool> OFF ON} | |
| Query Syntax | [:SOURce]:SIMulation:REPeat:ENABLE? | |
| Parameter | OFF 0 ON 1 | Disabled Enabled |
| Return parameter | +0 +1 | Disabled Enabled |
| Example | :SIM:REP:ENAB 1 | |

Enables the repeat function.

3-10-28. [:SOURce]:SIMulation:TRANSition<1|2>:TIME

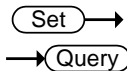


| | | |
|------------------|--|--|
| Description | Sets or queries the Time parameter of the transition step for the Simulation mode. | |
| Syntax | [:SOURce]:SIMulation:TRANSition<1 2>:TIME {<NR2> MINimum MAXimum} | |
| Query Syntax | [:SOURce]:SIMulation:TRANSition<1 2>:TIME? | |
| Parameter | <NR2> MINimum MAXimum | Time of the step in seconds 0 999.9999 |
| Return parameter | <NR2> | Retuns the time of the step. |


Example :SIM:TRAN1:TIME 1

Sets the step time to 1 second.

3-10-29. [:SOURce]:SIMulation:TRANSition<1|2>:CODE

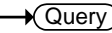


| | |
|-------------|---|
| Description | Sets the external trigger output for the transition step parameter. This option is only applicable when in the Simulation mode. |
|-------------|---|

| | | |
|---|---|---|
| Syntax | [:SOURce]:SIMulation:TRANSition<1 2>:CODE {<NR1> MINimum MAXimum} | |
| Query Syntax | [:SOURce]:SIMulation:TRANSition<1 2>:CODE? | |
| Parameter | <NR1> | 0=LL, 1=LH, 2=HL, 3=HH MINimum 0 (LL) MAXimum 3 (HH) |
| Return parameter | <NR1> | Returns the external trigger output for the transition step. |
| Example | SIM:TRAN1:CODE 1 | |
| 3-10-30. :TRIGger:SIMulation:SELEcted:EXECute | |  |

| | | |
|-------------|--|---|
| Description | Sets to execute actions for simulate mode | |
| Syntax | :TRIGger:SIMulation:SELEcted:EXECute {STOP START HOLD} | |
| Parameter | STOP START HOLD | Stops simulate execution Starts simulate execution Holds simulate execution |
| Example | TRIG:SIM:SEL:EXEC STAR Starts simulate execution. | |

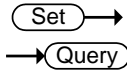
3-11. Input Subsystem Command

3-11-1. :INPut:GAIN 


| | | |
|------------------------------|--|--|
| Description | Sets or queries the input gain value. (Only AC+DC-EXT or AC-EXT or AC+DC-ADD or AC-ADD Active) | |
| Syntax | :INPut:GAIN {<NR2>(V) MINimum MAXimum} | |
| Query Syntax | :INPut:GAIN? | |
| Parameter / Return parameter | <NR2> MINimum MAXimum | Input gain value Minimum input gain value Maximum input gain value |

Example :INP:GAIN?
+150.0000
Returns the input gain value as 150.0.

3-11-2. :INPut:SYNC:SOURce



Description Sets or queries state of sync source. (Only AC+DC-sync or AC-sync Active)

Syntax :INPut:SYNC:SOURce {<NR1>|LINE|EXT}

Query Syntax :INPut:SYNC:SOURce?

| | | |
|-----------|--------|------------------|
| Parameter | LINE 0 | LINE sync source |
| | EXT 1 | EXT sync source |

| | | |
|------------------|------|------------------|
| Return parameter | LINE | LINE sync source |
| | EXT | EXT sync source |

Example :INP:SYNC:SOUR?
EXT
Returns the state of sync source as EXT.

3-12. Display Command

3-12-1. :DISPlay[:WINDow]:DESIgn:MODE



Description Sets two display mode.

Syntax :DISPlay[:WINDow]:DESIgn:MODE{NORMal|SIMPlE}

| | | |
|-----------|--------|----------------------------------|
| Parameter | MORMal | Configure setup and Measurement. |
| | SIMPlE | All measurement times. |

Example :DISP:DES:MODE NORM
Sets standard normal display.

3-12-2. :DISPlay[:WINDow]:MEASure:
SOURce<1|2|3>



Description Sets standard normal display to measurement items 1 – 3.

| | | |
|-----------|---|---|
| Syntax | :DISPlay[:WINDow]:MEASure:SOURce<1 3> { VRMS VAVG VMAX VMIN IRMS IAVG IMAX IMIN IPKH RPOWer SPOWer QPOWer FREQuency PFACtor CFACtor THDV THDI} | |
| Parameter | Item 1 | VRMS , VAVG , VMAX , VMIN , RPOWer , SPOWer* ¹ , QPOWer* ¹ , THDV* ² |
| | Item 2 | IRMS , IAVG , IMAX , IMIN , IPKH , PFACtor* ¹ , CFACtor* ¹ , THDI* ² |
| | Item 3 | RPOWer , SPOWer* ¹ , QPOWer* ¹ , IPKH , PFACtor* ¹ , CFACtor* ¹ , FREQuency* ³ |
| | Note | * ¹ : Not available for DC-INT * ² : Available for AC-INT only * ³ : Available for AC+DC-Sync & AC-Sync only |
| Example | :DISP:MEAS:SOURC1 VRMS Sets measurement source 1 VRMS display. | |

4. Status Register Overview

To program the ASR power supply effectively, the Status registers need to be understood. This chapter explains in detail how the Status registers are used and how to configure them.

4-1. Introduction to the Status Registers

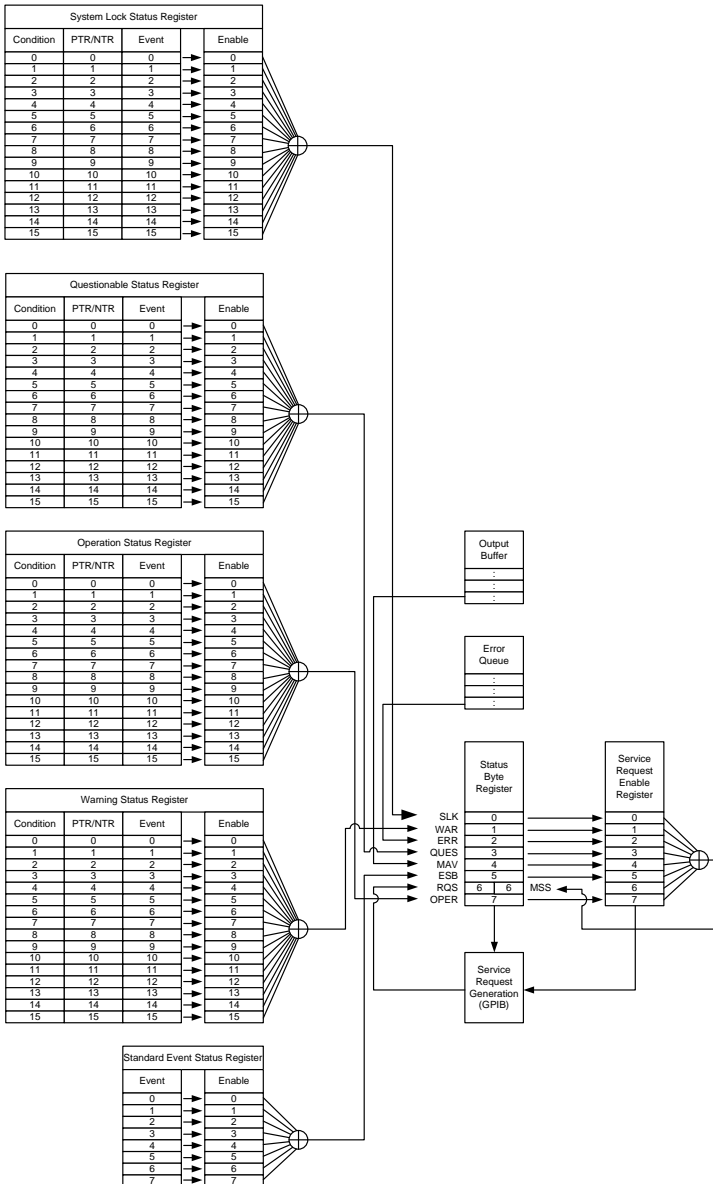
Overview

The status registers are used to determine the status of the power supply. The status registers maintain the status of the protection conditions, operation conditions and instrument errors. The ASR Series have a number of register groups:

- Questionable Status Register Group
- Standard Event Status Register Group
- Operation Status Register Group
- Warning Status Register Group
- System Lock Status Register Group
- Status Byte Register
- Service Request Enable Register
- Service Request Generation
- Error Queue
- Output Buffer

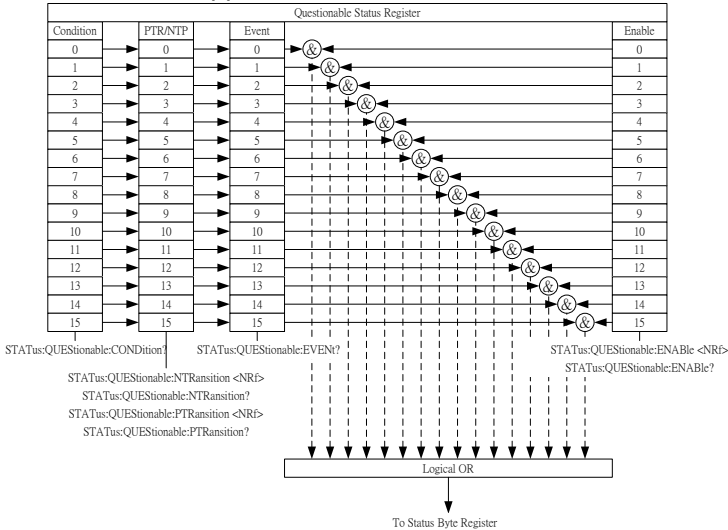
The diagram below shows the structure of the Status registers.

4-2. The Status Registers



4-3. Questionable Status Register Group

Overview The Questionable Status Register Group indicates if any protection modes or limits have been tripped.



Bit Summary

| Event | Bit # | Bit Weight |
|---|-------|------------|
| Output Overvoltage | 0 | 1 |
| Over internal maximum voltage (110% of rating voltage). | | |
| Over Irms Current | 1 | 2 |
| Output current RMS value is excessive | | |
| DCAC Power Unit Error | 3 | 8 |
| Internal DCAC power unit function error. | | |
| DCDC Power Unit Error | 4 | 16 |
| Internal DCDC power unit function error. | | |
| Output Short | 5 | 32 |
| Call attention to output terminal short status | | |

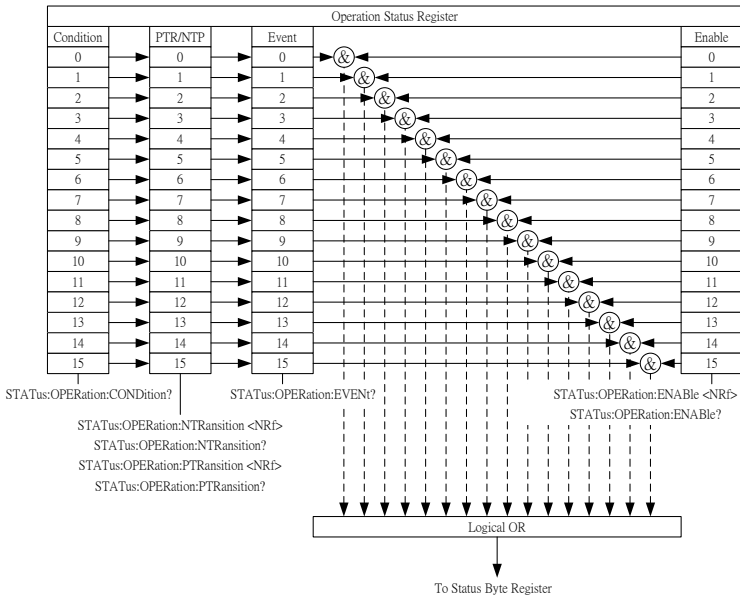
| | | | |
|--------------------|---|-----|-------|
| | Over Ipeak+ Current or Over Ipeak- Current Positive/Negative output current peak value is excessive. | 6 | 64 |
| | Fan Failure Fan failure. Contact service center. | 7 | 128 |
| | Calibration Data Error The calibration data is abnormal or out of allowance range. | 8 | 256 |
| | Output Over-Power Over internal power stage maximum power (110% of rating power) | 9 | 512 |
| | IPK Limit The peak current limiter is activated. | 10 | 1024 |
| | Remote Sensing Voltage Out of Range The Sensing voltage limiter is activated. | 11 | 2048 |
| | IRMS Limit The RMS current limiter is activated. | 12 | 4096 |
| | Always 0 | 15 | 32768 |
| Condition Register | The Questionable Status Condition Register indicates the status of the power supply. If a bit is set in the Condition register, it indicates that the event is true. Reading the condition register does not change the state of the condition register. | | |
| PTR/NTR Filters | The PTR/NTR (Positive/Negative transition) register determines the type of transition conditions that will set the corresponding bit in the Event Registers. Use the Positive transition bit filter to view events that change from false to positive, and use the negative transition filter to view events that change from positive to negative. | | |
| | Positive Transition | 0→1 | |
| | Negative Transition | 1→0 | |

Event Register The PTR/NTR Register will dictate the type of transition conditions will set the corresponding bits in the Event Register. If the Event Register is read, it will be cleared to 0.

Enable Register The Enable register determines which Events in the Event Register will be used to set the QUES bit in the Status Byte Register.

4-4.Operation Status Register Group

Overview The Operation Status Register Group indicates the operating status of the power supply.



Bit Summary

| Event | Bit # | Bit Weight |
|---------------------------|-------|------------|
| Busy Status | 1 | 2 |
| LOCK status (SYNC) status | 8 | 256 |
| Hold Status(Sequence) | 12 | 4096 |
| Run Status(Sequence) | 14 | 16384 |
| Always 0 | 15 | 32768 |

Condition Register The Operation Status Condition Register indicates the operating status of the power supply. If a bit is set in the Condition register, it indicates that the event is true. Reading the condition register does not change the state of the condition register.

PTR/NTR Filters The PTR/NTR (Positive/Negative transition) register determines the type of transition conditions that will set the corresponding bit in the Event Registers. Use the Positive transition filter to view events that change from false to positive, and use the negative transition filter to view events that change from positive to negative.

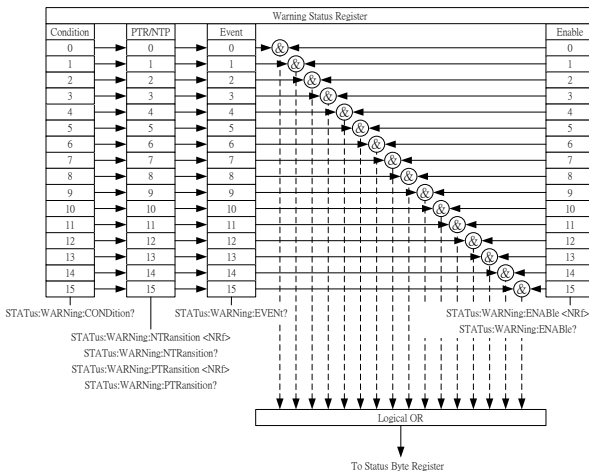
Positive Transition 0→1
 Negative Transition 1→0

Event Register The PTR/NTR Register will dictate the type of transition conditions will set the corresponding bits in the Event Register. If the Event Register is read, it will be cleared to 0.

Enable Register The Enable register determines which registered Events in the Event Register will be used to set the OPER bit in the Status Byte Register.

4-5.Warning Status Register Group

Overview The Warning Status Register Group is a secondary protection status register for the supply output.

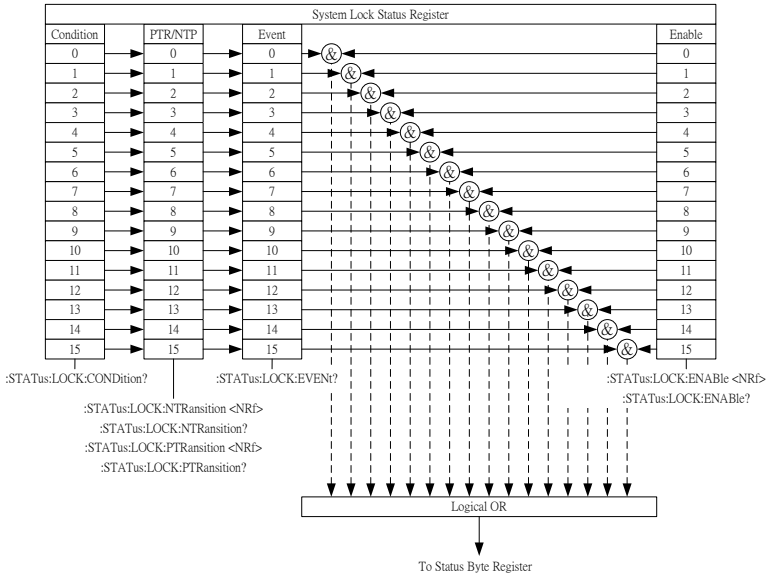


| Event | Bit # | Bit Weight |
|---|-------|------------|
| Output Overvoltage Over internal maximum voltage (110% of rating voltage). | 0 | 1 |
| Over Irms Current Output current RMS value is excessive | 1 | 2 |
| Over Ipeak+ Current or Over Ipeak- Current Positive/Negative output current peak value is excessive. | 3 | 8 |
| DCAC Power Unit Error Internal DCAC power unit function error. | 5 | 32 |
| DCDC Power Unit Error Internal DCDC power unit function error. | 6 | 64 |
| External Sync Frequency Error The external synchronization signal input frequency is out of the allowance range. (40Hz ~ 999.9Hz) | 7 | 128 |
| Sensing Voltage Error Remote sense connection wire is abnormal or over maximum compensation voltage. | 9 | 512 |
| Over Irms Current Output current RMS value is excessive | 10 | 1024 |
| Over Ipeak+ Current or Over Ipeak- Current Positive/Negative output current peak value is excessive. | 11 | 2048 |
| Output Over-Power Over internal power stage maximum power (110% of rating power) | 12 | 4096 |

| | | | |
|--------------------|---|-----|-------|
| | IRMS Limit | 13 | 8192 |
| | The RMS current limiter is activated. | | |
| | IPK Limit | 14 | 16384 |
| | The peak current limiter is activated. | | |
| | Always 0 | 15 | 32768 |
| Condition Register | The System Lock Status Condition Register indicates the system lock status of the power supply. If a bit is set in the Condition register, it indicates that the event is true. Reading the condition register does not change the state of the condition register. | | |
| PTR/NTR Filters | The PTR/NTR (Positive/Negative transition) register determines the type of transition conditions that will set the corresponding bit in the Event Registers. Use the Positive transition filter to view events that change from false to positive, and use the negative transition filter to view events that change from positive to negative. | | |
| | Positive Transition | 0→1 | |
| | Negative Transition | 1→0 | |
| Event Register | The PTR/NTR Register will dictate the type of transition conditions will set the corresponding bits in the Event Register. If the Event Register is read, it will be cleared to 0. | | |
| Enable Register | The Enable register determines which registered Events in the Event Register will be used to set the SLK bit in the Status Byte Register. | | |

4-6. System Lock Status Register Group

Overview The System Lock Status Register Group indicates if system lock protection modes have been tripped.



Bit Summary

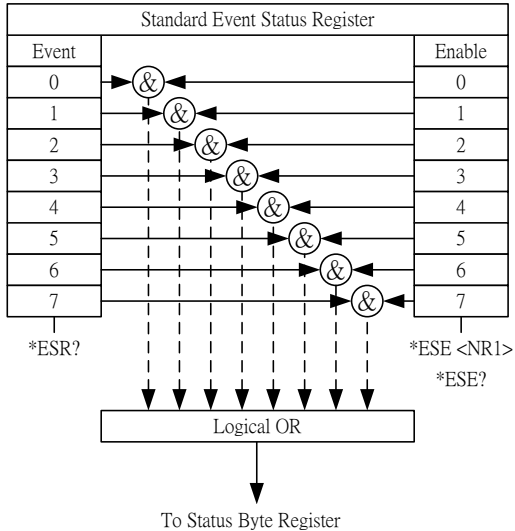
| Event | Bit # | Bit Weight |
|---|-------|------------|
| Power Input Anomaly The power input voltage is insufficient or turning off main power switch. Check input power before rebooting the unit. | 0 | 1 |
| Fan Failure Fan failure. Contact service center. | 7 | 128 |
| Startup Anomaly Abnormal startup procedure. | 8 | 256 |
| PFC Power Unit Error Internal PFC power unit function error. | 9 | 512 |

| | | | | | |
|---------------------|--|---------------------|-----|---------------------|-----|
| Condition Register | The System Lock Status Condition Register indicates the system lock status of the power supply. If a bit is set in the Condition register, it indicates that the event is true. Reading the condition register does not change the state of the condition register. | | | | |
| PTR/NTR Filters | The PTR/NTR (Positive/Negative transition) register determines the type of transition conditions that will set the corresponding bit in the Event Registers. Use the Positive transition filter to view events that change from false to positive, and use the negative transition filter to view events that change from positive to negative. <table border="1" data-bbox="367 534 748 598"> <tr> <td>Positive Transition</td> <td>0→1</td> </tr> <tr> <td>Negative Transition</td> <td>1→0</td> </tr> </table> | Positive Transition | 0→1 | Negative Transition | 1→0 |
| Positive Transition | 0→1 | | | | |
| Negative Transition | 1→0 | | | | |
| Event Register | The PTR/NTR Register will dictate the type of transition conditions will set the corresponding bits in the Event Register. If the Event Register is read, it will be cleared to 0. | | | | |
| Enable Register | The Enable register determines which registered Events in the Event Register will be used to set the SLK bit in the Status Byte Register. | | | | |

4-7. Standard Event Status Register Group

Overview

The Standard Event Status Register Group indicates if any errors have occurred. The bits of the Event register are set by the error event queue.



Bit Summary

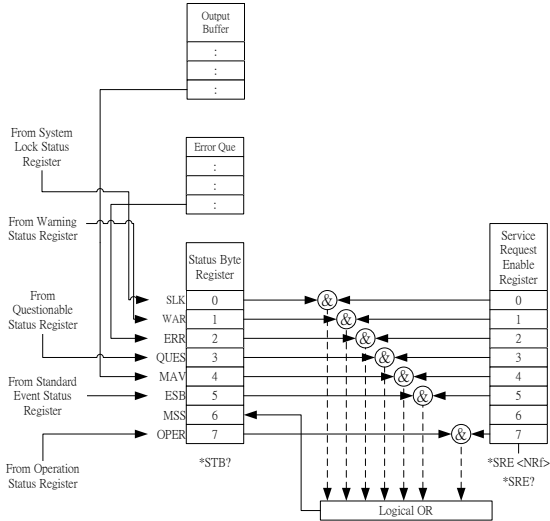
| Event | Bit # | Bit Weight |
|--|-------|------------|
| OPC (Operation complete) The OCP bit is set when all selected pending operations are complete. This bit is set in response to the *OPC command. | 0 | 1 |
| RQC (Request control) | 1 | 2 |
| QUE (Query Error) The Query Error bit is set in response to an error reading the Output Queue. This can be caused by trying to read the Output Queue when there is no data present. | 2 | 4 |

| | | | |
|-----------------|--|---|-----|
| | DDE (Device Dependent Error) | 3 | 8 |
| | Device specific error. | | |
| | EXE (Execution Error) | 4 | 16 |
| | The EXE bit indicates an execution error due to one of the following: illegal command parameter, parameter out of range, invalid parameter, the command didn't execute due to an overriding operation condition. | | |
| | CME (Command Error) | 5 | 32 |
| | The CME bit is set when a syntax error has occurred. The CME bit can also be set when a <GET> command is received within a program message. | | |
| | URQ (User Request) | 6 | 64 |
| | PON (Power On) | 7 | 128 |
| | Indicates the power is turned on. | | |
| Event Register | Any bits set in the event register indicate that an error has occurred. Reading the Event register will reset the register to 0. | | |
| Enable Register | The Enable register determines which Events in the Event Register will be used to set the ESB bit in the Status Byte Register. | | |

4-8. Status Byte Register & Service Request Enable Register

Overview

The Status Byte register consolidates the status events of all the status registers. The Status Byte register can be read with the *STB? query and can be cleared with the *CLS command.



Bit Summary

| Event | Bit # | Bit Weight |
|---|-------|------------|
| SLK(System Lock Status Register Summary) | 0 | 1 |
| WAR (Warning Status Register) | 1 | 2 |
| ERR (Error Queue not empty) | 2 | 4 |
| QUES (Questionable Status Register) | 3 | 8 |
| MAV (Message Available) | 4 | 16 |
| ESB(Standard Event Status Register Summary) | 5 | 32 |
| RQS / MSS(Reuest Service / Master Summary Status) | 6 | 64 |

| | | | |
|---------------------------------|---|---|-----|
| | OPER (Operation Status Register) | 7 | 128 |
| Status Byte Register | Any bits set in the Status byte register acts as a summary register for all the three other status registers and indicates if there is a service request, an error in the Error Queue or data in the Output Queue. Reading the Status Byte register will reset the register to 0. | | |
| Service Request Enable Register | The Service Request Enable Register controls which bits in the Status Byte Register are able to generate service requests. | | |

5. Error List

5-1.Command Errors

Overview

An <error/event number> in the range [-199 , -100] indicates that an IEEE 488.2 syntax error has been detected by the instrument's parser. The occurrence of any error in this class shall cause the command error bit (bit 5) in the event status register (IEEE 488.2, section 11.5.1) to be set. One of the following events has occurred:

- An IEEE 488.2 syntax error has been detected by the parser. That is, a controller-to-device message was received which is in violation of the IEEE 488.2 standard. Possible violations include a data element which violates the device listening formats or whose type is unacceptable to the device.
- An unrecognized header was received. Unrecognized headers include incorrect device-specific headers and incorrect or unimplemented IEEE 488.2 common commands.

Events that generate command errors shall not generate execution errors, device-specific errors, or query errors; see the other error definitions in this chapter.

| Error Code | Description |
|--------------------------------|--|
| -100 Command Error | This is the generic syntax error for devices that cannot detect more specific errors. This code indicates only that a Command Error as defined in IEEE 488.2, 11.5.1.1.4 has occurred. |
| -102 Syntax error | An unrecognized command or data type was encountered; for example, a string was received when the device does not accept strings. |
| -103 Invalid separator | The parser was expecting a separator and encountered an illegal character; for example, the semicolon was omitted after a program message unit, MEAS:VOLT:DC?:MEASCURR:DC? |
| -104 Data type error | The parser recognized a data element different than one allowed; for example, numeric or string data was expected but block data was encountered. |
| -108 Parameter not allowed | More parameters were received than expected for the header; for example, the :SYSTem:KLOCK command only accepts one parameter, so receiving SYSTem:KLOCK 1,0 is not allowed. |
| -109 Missing parameter | Fewer parameters were received than required for the header; for example, the :SYSTem:KLOCK command requires one parameter, so receiving :SYSTem:KLOCK is not allowed. |
| -111 Header separator error | A character which is not a legal header separator was encountered while parsing the header; for example, no white space followed the header, thus *SRE2 is an error. |
| -112 Program mnemonic too long | The header contains more than twelve characters (see IEEE 488.2, 7.6.1.4.1). |

| | |
|--------------------------------------|---|
| -113 Undefined header | The header is syntactically correct, but it is undefined for this specific device; for example, *XYZ is not defined for any device. |
| -114 Header suffix out of range | The value of a numeric suffix attached to a program mnemonic, see Syntax and Style section 6.2.5.2, makes the header invalid. |
| -115 Unexpected number of parameters | The number of parameters received does not correspond to the number of parameters expected. This is typically due an inconsistency with the number of instruments in the selected group. |
| -120 Numeric data error | This error, as well as errors -121 through -129, are generated when parsing a data element which appears to be numeric, including the nondecimal numeric types. This particular error message should be used if the device cannot detect a more specific error. |
| -121 Invalid character in number | An invalid character for the data type being parsed was encountered; for example, an alpha in a decimal numeric or a "9" in octal data. |
| -128 Numeric data not allowed | A legal numeric data element was received, but the device does not accept one in this position for the header. |
| -131 Invalid suffix | The suffix does not follow the syntax described in IEEE 488.2, 7.7.3.2, or the suffix is inappropriate for this device. |
| -141 Invalid character data | Either the character data element contains an invalid character or the particular element received is not valid for the header. |
| -148 Character data not allowed | A legal character data element was encountered where prohibited by the device. |
| -151 Invalid string data | A string data element was expected, but was invalid for some reason (see IEEE 488.2, 7.7.5.2); for example, an END message was received before the terminal quote character. |

| | |
|----------------------------------|---|
| -158 String data not allowed | A string data element was encountered but was not allowed by the device at this point in parsing. |
| -160 Block data error | This error, as well as errors -161 through -169, are generated when parsing a block data element. This particular error message should be used if the device cannot detect a more specific error. |
| -161 Invalid block data | A block data element was expected, but was invalid for some reason (see IEEE 488.2, 7.7.6.2); for example, an END message was received before the length was satisfied. |
| -168 Block data not allowed | A legal block data element was encountered but was not allowed by the device at this point in parsing. |
| -178 Expression data not allowed | A legal expression data was encountered but was not allowed by the device at this point in parsing. |

5-2.Execution Errors

Overview

An <error/event number> in the range [-299 , -200] indicates that an error has been detected by the instrument's execution control block. The occurrence of any error in this class shall cause the execution error bit (bit 4) in the event status register (IEEE 488.2, section 11.5.1) to be set. One of the following events has occurred:

- A <PROGRAM DATA> element following a header was evaluated by the device as outside of its legal input range or is otherwise inconsistent with the device's capabilities.
- A valid program message could not be properly executed due to some device condition.

Execution errors shall be reported by the device after rounding and expression evaluation operations have taken place. Rounding a numeric data element, for example, shall not be reported as an execution error. Events that generate execution errors shall not generate Command Errors, device-specific errors, or Query Errors; see the other error definitions in this section.

| Error Code | Description |
|-----------------------------|---|
| -200 Execution error | This is the generic syntax error for devices that cannot detect more specific errors. This code indicates only that an Execution Error as defined in IEEE 488.2, 11.5.1.1.5 has occurred. |
| -201 Invalid while in local | Indicates that a command is not executable while the device is in local due to a hard local control (see IEEE 488.2, 5.6.1.5); for example, a device with a rotary switch receives a message which would change the switches state, but the device is in local so the message cannot be executed. |

| | |
|------------------------------|---|
| -203 Command protected | Indicates that a legal password-protected program command or query could not be executed because the command was disabled. |
| -211 Trigger ignored | Indicates that a GET, *TRG, or triggering signal was received and recognized by the device but was ignored because of device timing considerations; for example, the device was not ready to respond. Note: a DT0 device always ignores GET and treats *TRG as a Command Error. |
| -213 Init ignored | Indicates that a request for a measurement initiation was ignored as another measurement was already in progress. |
| -220 Parameter error | Indicates that a program data element related error occurred. This error message should be used when the device cannot detect the more specific errors described for errors -221 through -229. |
| -221 Settings conflict | Indicates that a legal program data element was parsed but could not be executed due to the current device state (see IEEE 488.2, 6.4.5.3 and 11.5.1.1.5.). |
| -222 Data out of range | Indicates that a legal program data element was parsed but could not be executed because the interpreted value was outside the legal range as defined by the device (see IEEE 488.2, 11.5.1.1.5.). |
| -224 Illegal parameter value | Used where exact value, from a list of possibles, was expected. |

5-3.Device Specific Errors

Overview

An <error/event number> in the range [-399 , -300] or [1 , 32767] indicates that the instrument has detected an error which is not a command error, a query error, or an execution error; some device operations did not properly complete, possibly due to an abnormal hardware or firmware condition. These codes are also used for self-test response errors. The occurrence of any error in this class should cause the device-specific error bit (bit 3) in the event status register (IEEE 488.2, section 11.5.1) to be set. The meaning of positive error codes is device-dependent and may be enumerated or bit mapped; the <error message>-string for positive error codes is not defined by SCPI and available to the device designer.

Note that the string is not optional; if the designer does not wish to implement a string for a particular error, the null string should be sent (for example, 42,""). The occurrence of any error in this class should cause the device-specific error bit (bit 3) in the event status register (IEEE 488.2, section 11.5.1) to be set. Events that generate device-specific errors shall not generate command errors, execution errors, or query errors; see the other error definitions in this section.

| Error Code | Description |
|--------------------|--|
| -310 System error | Indicates that some error, termed "system error" by the device, has occurred. This code is device-dependent. |
| -320 Storage fault | Indicates that the firmware detected a fault when using data storage. This error is not an indication of physical damage or failure of any mass storage element. |

5-4. Query Errors

Overview

An <error/event number> in the range [-499 , -400] indicates that the output queue control of the instrument has detected a problem with the message exchange protocol described in IEEE 488.2, chapter 6. The occurrence of any error in this class shall cause the query error bit (bit 2) in the event status register (IEEE 488.2, section 11.5.1) to be set. These errors correspond to message exchange protocol errors described in IEEE 488.2, section 6.5. One of the following is true:

- An attempt is being made to read data from the output queue when no output is either present or pending;
- Data in the output queue has been lost.

Events that generate query errors shall not generate command errors, execution errors, or device-specific errors; see the other error definitions in this section.

| Error Code | Description |
|------------------|---|
| -400 Query error | This is the generic query error for devices that cannot detect more specific errors. This code indicates only that a Query Error as defined in IEEE 488.2, 11.5.1.1.7 and 6.3 has occurred. |

6. APPENDIX

6-1. Factory Default Settings

The following default settings are the factory configuration settings for the ASR series. For details on how to return to the factory default settings, please see the user manual.

| AC+DC-INT Mode | ASR202-401G | ASR302-401G | ASR402-401G |
|----------------|-------------|---------------|-------------|
| Range | | 100V | |
| Wave Shape | | SIN | |
| ACV | | 0.0 Vrms | |
| DCV | | +0.0 Vdc | |
| FREQ | | 50.00 Hz | |
| IRMS | 21.00 A | 31.50 A | 42.00 A |
| V Limit | | +/- 285.0 Vpp | |
| F Limit Lo | | 1.00 Hz | |
| F Limit Hi | | 999.9 Hz | |
| IPK Limit | +/- 126.0 A | +/- 189.0 A | +/- 252.0 A |
| ON Phs | | 0.0° | |
| OFF Phs | | 0.0° | |

| AC-INT Mode | ASR202-401G | ASR302-401G | ASR402-401G |
|-------------|-------------|-------------|-------------|
| Range | | 100V | |
| Wave Shape | | SIN | |
| ACV | | 0.0 Vrms | |
| FREQ | | 50.00 Hz | |
| IRMS | 21.00 A | 31.50 A | 42.00 A |
| V Limit | | 175.0 Vrms | |
| F Limit Lo | | 40.00 Hz | |
| F Limit Hi | | 999.9 Hz | |
| IPK Limit | +/- 126.0 A | +/- 189.0 A | +/- 252.0 A |
| ON Phs | | 0.0° | |
| OFF Phs | | 0.0° | |

| DC-INT Mode | ASR202-401G | ASR302-401G | ASR402-401G |
|-------------|-------------|---------------|-------------|
| Range | | 100V | |
| DCV | | 0.0 Vdc | |
| I | 21.00 A | 31.50 A | 42.00 A |
| V Limit | | +/- 285.0 Vpp | |
| IPK Limit | +/- 126.0 A | +/- 189.0 A | +/- 252.0 A |

| AC+DC-EXT Mode | ASR202-401G | ASR302-401G | ASR402-401G |
|----------------|-------------|-------------|-------------|
| Range | | 100V | |
| GAIN | | 100.0 | |
| IRMS | 21.00 A | 31.50 A | 42.00 A |
| IPK Limit | +/- 126.0 A | +/- 189.0 A | +/- 252.0 A |

| AC-EXT Mode | ASR202-401G | ASR302-401G | ASR402-401G |
|-------------|-------------|-------------|-------------|
| Range | | 100V | |
| GAIN | | 100.0 | |
| IRMS | 21.00 A | 31.50 A | 42.00 A |
| IPK Limit | +/- 126.0 A | +/- 189.0 A | +/- 252.0 A |

| AC+DC-ADD Mode | ASR202-401G | ASR302-401G | ASR402-401G |
|----------------|-------------|---------------|-------------|
| Range | | 100V | |
| Wave Shape | | SIN | |
| ACV | | 0.0 Vrms | |
| DCV | | +0.0 Vdc | |
| GAIN | | 100.0 | |
| FREQ | | 50.00 Hz | |
| IRMS | 21.00 A | 31.50 A | 42.00 A |
| V Limit | | +/- 285.0 Vpp | |
| F Limit Lo | | 1.00 Hz | |
| F Limit Hi | | 999.9 Hz | |
| IPK Limit | +/- 126.0 A | +/- 189.0 A | +/- 252.0 A |
| ON Phs | | 0.0° | |
| OFF Phs | | 0.0° | |

| AC-ADD Mode | ASR202-401G | ASR302-401G | ASR402-401G |
|-------------|-------------|-------------|-------------|
| Range | | 100V | |
| Wave Shape | | SIN | |
| ACV | | 0.0 Vrms | |
| GAIN | | 100.0 | |
| FREQ | | 50.00 Hz | |
| IRMS | 21.00 A | 31.50 A | 42.00 A |
| V Limit | | 200.0 Vrms | |
| F Limit Lo | | 40.0 Hz | |
| F Limit Hi | | 999.9 Hz | |
| IPK Limit | +/- 126.0 A | +/- 189.0 A | +/- 252.0 A |
| ON Phs | | 0.0° | |
| OFF Phs | | 0.0° | |

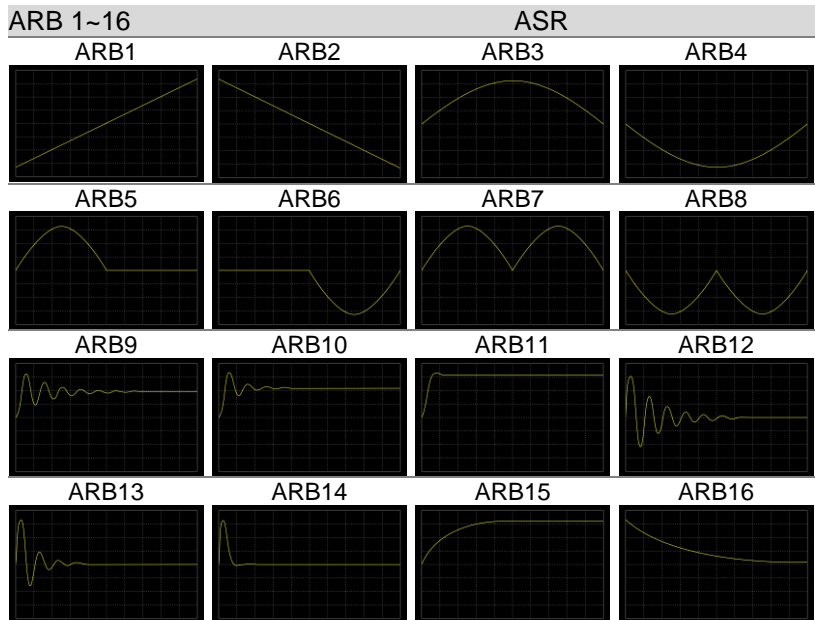
| AC+DC-SYNC Mode | ASR202-401G | ASR302-401G | ASR402-401G |
|-----------------|-------------|---------------|-------------|
| Range | | 100V | |
| Wave Shape | | SIN | |
| ACV | | 0.0 Vrms | |
| DCV | | +0.0 Vdc | |
| SIG | | LINE | |
| IRMS | 21.00 A | 31.50 A | 42.00 A |
| V Limit | | +/- 285.0 Vpp | |
| F Limit | | 999.9 Hz | |
| IPK Limit | +/- 126.0 A | +/- 189.0 A | +/- 252.0 A |
| ON Phs | | 0.0° | |
| OFF Phs | | 0.0° | |

| AC-SYNC Mode | ASR202-401G | ASR302-401G | ASR402-401G |
|--------------|-------------|-------------|-------------|
| Range | | 100V | |
| Wave Shape | | SIN | |
| ACV | | 0.0 Vrms | |
| SIG | | LINE | |
| IRMS | 21.00 A | 31.50 A | 42.00 A |
| V Limit | | 200.0 Vrms | |
| F Limit | | 999.9 Hz | |
| IPK Limit | +/- 126.0 A | +/- 189.0 A | +/- 252.0 A |
| ON Phs | | 0.0° | |
| OFF Phs | | 0.0° | |

| Menu | ASR |
|---------------------|--------|
| T ipeak, hold(msec) | 1 ms |
| Ipkh CLR | EXEC |
| Power ON | OFF |
| Buzzer | ON |
| Remote Sense | OFF |
| Slew Rate Mode | Slope |
| Output Relay | Enable |
| THD Format | IEC |
| External Control | OFF |
| V Unit (TRI, ARB) | rms |
| Data Average Count | 1 |
| Data Update Rate | Fast |
| TrgOut Source | None |

| LAN | ASR |
|------|-----|
| DHCP | ON |

| | |
|------------------------|---------------|
| USB Device | ASR |
| Speed | Full |
| RS232C | G Type |
| Baudrate | 9600 |
| Databits | 8bits |
| Parity | None |
| Stopbits | 1bit |
| GPIB | G Type |
| Address | 10 |
| Sequence Mode | ASR |
| Step | 0 |
| Time | 0.1000 s |
| ACV | 0.0, CT |
| DCV | 0.0, CT |
| Fset | 50.0, CT |
| Wave | SIN |
| Jump To | OFF |
| Jump Cnt | 1 |
| Branch 1 | OFF |
| Branch 2 | OFF |
| Term | CONTI |
| Sync Code | LL |
| ON Phs | Free |
| OFF Phs | Free |
| Simulation Mode | ASR |
| Step | Initial |
| Repeat | OFF |
| Time | 0.1000 s |
| ACV | 0.0 |
| Fset | 50.00 |
| ON Phs | Free |
| OFF Phs | Free |
| Wave | SIN |
| Code | LL |





TEXIO TECHNOLOGY CORPORATION

Towa Fudosan Shin Yokohama Bldg.

2-18-13, Shin Yokohama, Kohoku-ku, Yokohama, Kanagawa, 222-0033 Japan

<https://www.texio.co.jp>
